

Adapter DIP-40_A1

EzoFlash+ adapter for MCS-51 microcontrollers in DIP-40 package.

1. Part list.

R1, R2 – 1k2

R3 – 2k2

R-PACK – 9x10k or 8x4k7...10k

C1, C2 – 24pF

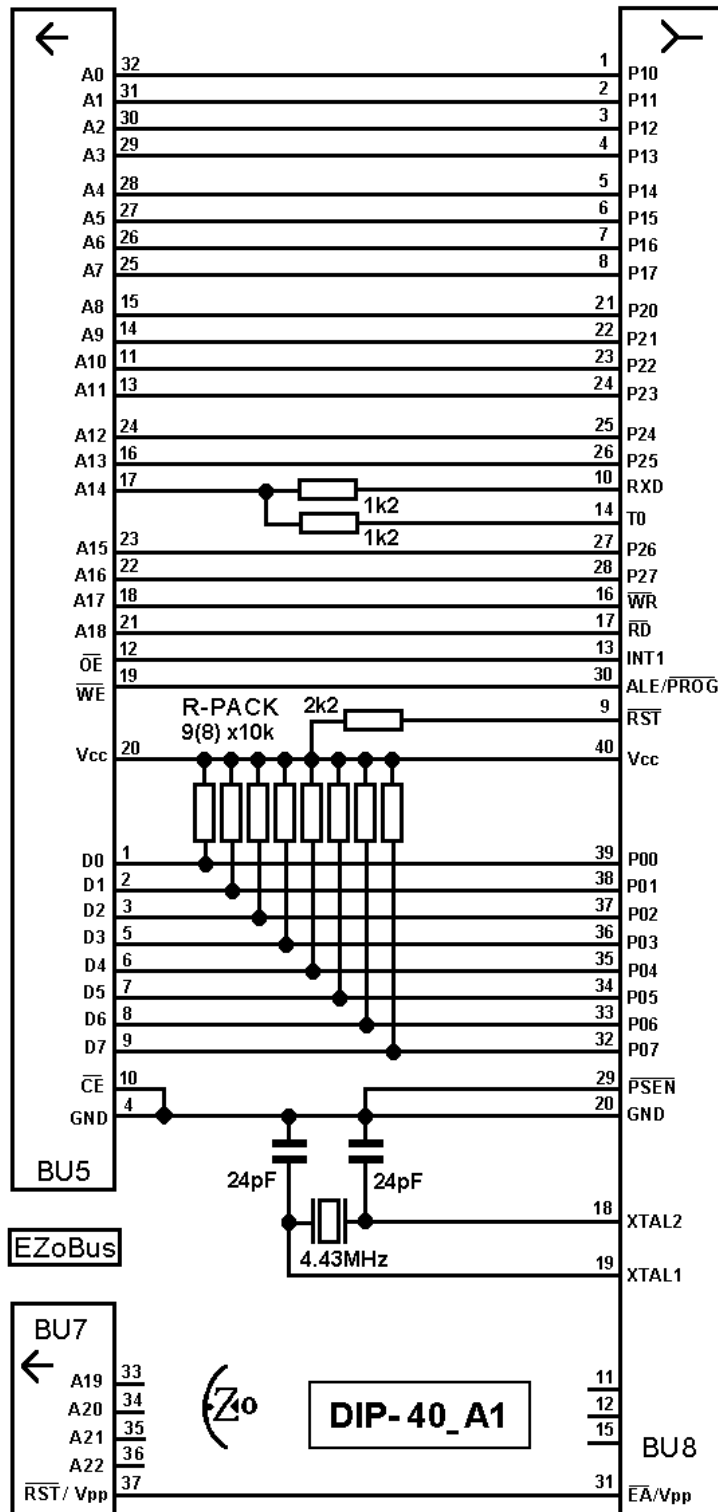
X1 – Quartz resonator 4.43 MHz (4...10MHz)

BU5 – Straight pin-header 2x16, division 2.54

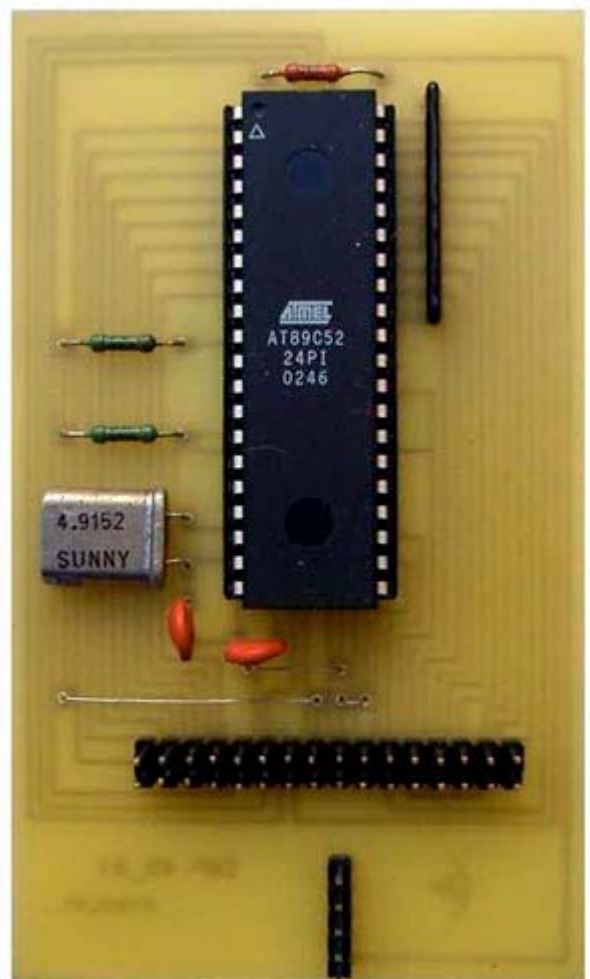
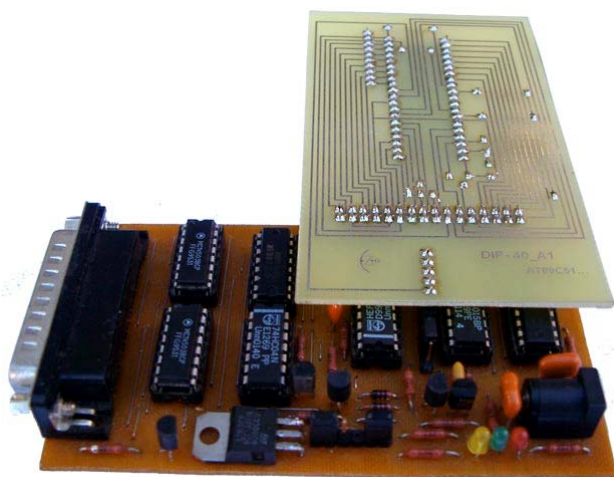
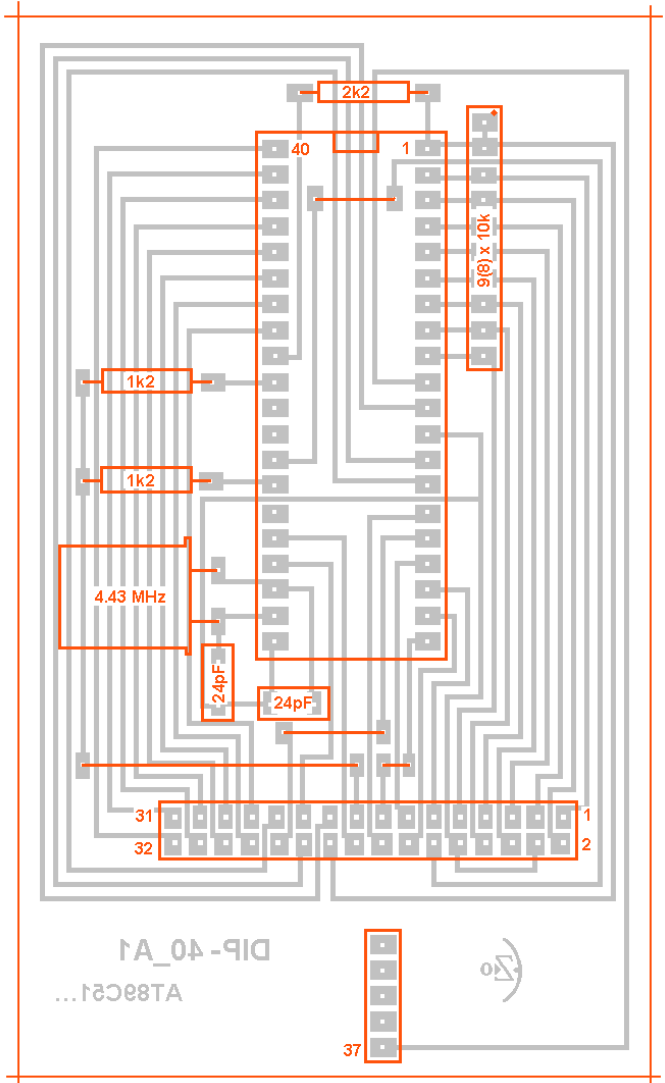
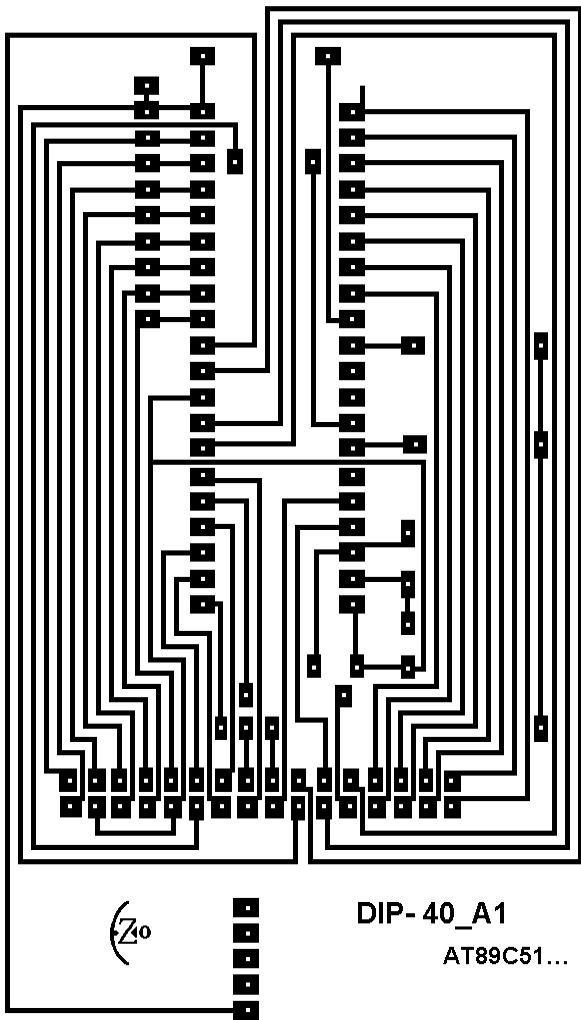
BU7 – Straight pin-header 1x5, division 2.54

BU8 – IC Socket DIL-40

2. Schematic, PCB and pictures



104 x 62 mm



3. Settings, verified chip list and info.

Willem programmer software version 0.97ja

Selected device group *MCS-51* > *AT89C5x* > ...

Vcc=5.0V, Vpp=12.0V. Jumpers Jp1, Jp3 (5.0V), Jp5 (A18)

Verified chips AT89C51, AT89C52, AT89C55, Intel D87C51FC, AT89C51RC.

Chips AT89C51RC and AT89C55WD with active lockbits can't be erased, Vcc=6.2V required.

Software doesn't support chip AT89C51RD.

Test results find in chip_test.xls file

Report problems and share your experience on Willem and EZoFlash forums.