

## Adapters PLCC-32A and PLCC-32A1

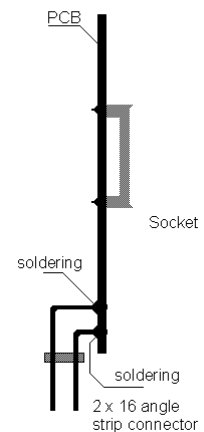
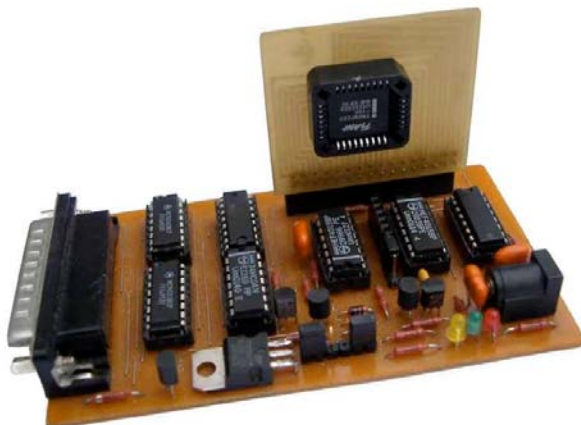
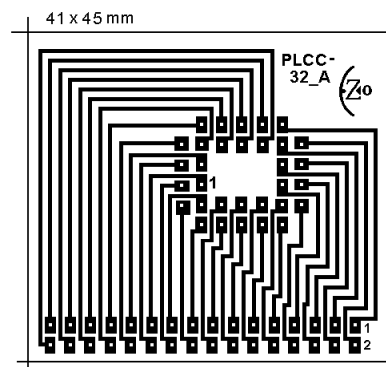
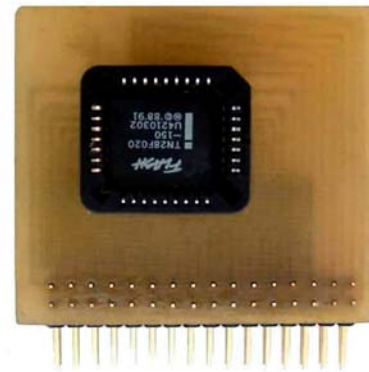
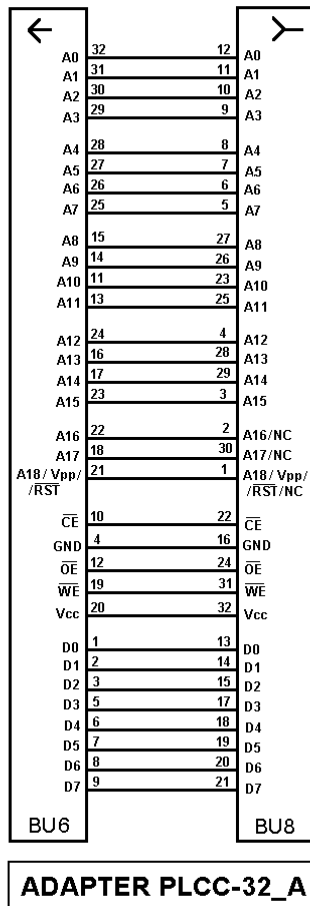
EzoFlash+ adapters for 8-bit flash memory in PLCC-32 package.

### 1. Part list.

BU6 – Angle dual pin-header 2 x16, division 2.54

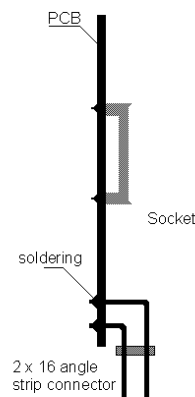
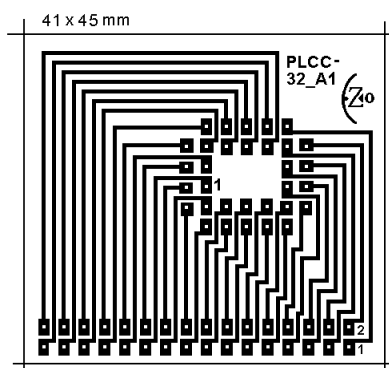
BU8 – PLCC-32 socket

### 2. Schematic, PCB and pictures



New design PLCC-32A1 recommended (modify by Inionis).

Insert angle strip connector from components side. No soldering iron with fine tips required more.



### 3. Supported chip list

Willem programmer software version 0.97ja or 0.97g.

Verified chips on mentioned adapter are underlined. Details find in chip\_test.xls file

Software may not support some chip, report problem in Willem/EZoFlash forums.

#### **GROUP A (Uniform sectors)**

Selected device group *Flash 29/39/49Fxxx > 29Fxxx ; Flash 29/39/49Fxxx > 39/49xxx*

- Vcc=5V. Pin1-NC or A18. Jumpers Jp1, Jp3 (+5V), Jp5 (A18).

Alliance AS29F010, AS29F040 **AMD** AM29F010, AM29F010A, AM29F010B, AM29F040, AM29F040B **Amic** A29512AL, A29010L, A29040L, A29040AL, A29040BL **Atmel** AT49F512, AT49F010, AT49HF010, AT49F020, AT49F040 **Bright** BM29F020, BM29F040 **EON** EN29F512, EN29F010, EN29F040, EN29F040A **Fujitsu** (MBM) 29F040, 29F040A, 29F040B, 29F040C **Hyundai/Hynix** HY29F040, HY29F040A **Macronix** MX29F040 **Megawin** MM29F040 **Micron** MT29F040A **Mosel Vitelic** V29LC51000, V29LC51001, V29LC51002 **NexFlash** NX29F010, **PMC** PM39F010, PM39F020, PM39F040 **SST** SST39SF512, SST39SF010, SST39SF010A, SST39SF020A, SST39SF040, SST39SF040A **SGS/ST Micro** M29F512B, M29F010B, M29F040, M29F040B **SyncMos** F29LC51000, F29LC51001, F29LC51002 **Texas Instr.** TMS29F010, TMS29F040 **Winbond** W39F010

- Vcc=3.3V. Pin1-NC or A18. Jumpers Jp2 (+3.6V), Jp5 (A18).

**Actrans** AC39LV512, AC39LV010, AC39LV020, AC39LV040 **AMD** AM29LV010B, AM29LV040B **Amic** A29L040L, A29L040X **Atmel** AT49BV512, AT49BV010, AT49HLV010, AT49HBV010, AT49LV020, AT49BV020, AT49LV040, AT49BV040 **EliteMT** F49L040A **EON** EN29LV512, EN29LV010, EN29LV040, EN29LV040J **Macronix** MX29LV040, **PMC** PM39LV512, PM39LV010, PM39LV020, PM39LV040 **Megawin** MM29LF040 **SST** SST39LF512, SST39VF512, SST39LF010, SST39VF010, SST39LF020, SST39VF020, SST39LF040, SST39VF040 **ST Micro** M29W512B, M29W010B, M29W040, M29W040B, **Texas Instr.** TMS29LF040, TMS29VF040 **Winbond** W39L512, W39L010, W39L020, W39L040, W39L040A

#### **GROUP B (Vpp, Bulk Erase Flash Memory)**

Selected device group *Flash 28Fxxx > 28Fxxx ; Flash 28Fxxx > MX28Fx000A*

- Vcc=5V, pin1-Vpp=12V. Jumpers Jp1, Jp3 (+5V), Jp4 (Vpp).

**AMD** AM28F256, AM28F256A, AM28F512, AM28F512A, AM28F010, AM28F010A, AM28F020, AM28F020A **Catalyst** CAT28F512, CAT28F010, CAT28F020, **Intel** (TN,N) N28F256A, N28F512, N28F010, N28F020 **ISSI** IS28F010, IS28F010A, IS28F020 **Macronix** MX28F1000PQ, MX28F2000PQ, MX28F2000TQ **Mitsubishi** M5M28F101, M5M28F101A **SGS/ST Micro** M28F256, M28F512, M28F101, M28F201 **Texas Instr.** TMS28F512A, TMS28F010A, TMS28F010B, TMS28F020

### GROUP C (Small sector size)

Apply Willem software 0.97g. Erase fail on 0.97ja, possible overwrite without erase.

Selected device group *Flash AT29C/29EExxx ; Flash 28Fxxx > SST28xF0x0,4001*

- Vcc=5V. Pin1- NC or A18. Jumpers Jp1, Jp3 (+5V), Jp5 (A18).

**ASD** AE29F1008, AE29F2008 **Atmel** AT29C257, AT29C512, AT29C010A, AT29C020, AT29C040A, **SST** SST28SF040A, SST29EE512, NH29EE512, SST29EE010, NH29EE010, SST29EE020, SST29SF512, SST29SF010, SST29SF020, SST29SF040 **Winbond** W29C512, W29C512A, W29C011A, W29C020, W29C020C, W29C022, W29C040P, W29D040C, W29EE512, W29EE011, W29EE012

- Vcc=3.3V. Pin1- NC or A18. Jumpers Jp2 (+3.6V), Jp5 (A18).

**Atmel** AT29LV512, AT29LV010A, AT29BV010A, AT29LV020, AT29BV020, AT29LV040A **SST** SST29LE512, SST29LE010, NH29LE010, SST29LE020, SST29VE512, SST29VE010, SST29VE020, SST29VF512, SST29VF010, SST29VF020, SST29VF040, SST28VF040A

### GROUP D (Top or Bottom Boot Block)

Selected device group *Flash 29/39/49Fxxx > 29/49F00 ; Flash 29/39/49Fxxx > MXIC29Fxxx*

- Vcc=5V, pin1-Reset or NC. Jumpers Jp1, Jp3 (+5V), Jp4 (RST).

**Alliance** AS29F002T, AS29F002B **AMD** AM29F002T, AM29F002B, AM29F002NT, AM29F002NB, AM29F002BT, AM29F002BB, AM29F002NBT, AM29F002NBB **Amic** A29001TL, A29001UL, A29011TL, A29011UL, A29002TL, A29002UL, A290021TL, A290021UL **Atmel** AT49F001, AT49F001T, AT49F001N, AT49F001NT, AT49F002, AT49F002T, AT49F002N, AT49F002NT, AT49F002A, AT49F002AT, AT49F002AN, AT49F002ANT **EliteMT** F49B002UA **EMTC** eM29SF002AT, eM29SF002AB, eM29SF002NAT, eM29SF002NAB **EON** EN29F001T, EN29F001B, EN29F001NT, EN29F001NB, EN29F002T, EN29F002B, EN29F002NT, EN29F002NB, EN29F002AT, EN29F002AB, EN29F002ANT, EN29F002ANB **Fujitsu** (MBM) 29F002T, 29F002B, 29F002TC, 29F002BC **Hynix** HY29F002T, HY29F002B **IMT** IM29F001T, IM29F001B, IM29F002T, IM29F002B, **Macronix** MX29F001T, MX29F001B, MX29F002T, MX29F002B, MX29F002NT, MX29F002NB, MX29F022T, MX29F022B, MX29F022NT, MX29F022NB, **Mosel Vitelic** V29C51000T, V29C51000B, V29C51001T, V29C51001B, V29C51002T, V29C51002B **PMC** PM29F002T, PM29F002B, **SGS/ST** **Micro** M29F002T, M29F002B, M29F002NT, M29F002NB, M29F002BT, M29F002BB, M29F002BNT, M29F002BNB **SyncMos** F29C51000T, F29C51000B, F29C51001T, F29C51001B, F29C51002T, F29C51002B, S29C51000T, S29C51001T, S29C51001B, S29C51002T, **Texas Instr** TMS29F002RT, TMS29F002RB **Winbond** W49F002, W49F002B, W49F002U, W49F002N, W49F020P

- Vcc=5V, pin1-A18 4Mb. Jumpers Jp1, Jp3 (+5V), Jp5 (A18).

**AMD** AM29F004BT, AM29F004BB, **Fujitsu** MBM29F004TC, MBM29F004BC, **IMT** IM29F004T, IM29F004B, **Macronix** MX29F004T, MX29F004B, **Mosel Vitelic** V29C51004T, V29C51004B, **SyncMos** F29C51004T, F29C51004B, S29C51004T, **PMC** PM29F004T, PM29F004B

- Vcc=3.3V, pin1-Reset or NC. Jumpers Jp2 (+3.6V), Jp4 (RST)

**AMD** AM29LV001BT, AM29LV001BB **Atmel** AT49LV001, AT49LV001N, AT49LV001T, AT49LV001NT, AT49BV001, AT49BV001N, AT49BV001T, AT49BV001NT, AT49LV002, AT49LV002N, AT49LV002T, AT49LV002NT, AT49BV002, AT49BV002N, AT49BV002T, AT49BV002NT, AT49BV002A, AT49BV002AN, AT49BV002AT, AT49BV002ANT **IMT** IM29LV001T, IM29LV001B **ST Micro** M29W022BT, M29W022BB

- Vcc=3.3V, pin1-A18 4Mb. Jumpers Jp2 (+3.6V), Jp5 (A18)

**Amic** A29L004TL, A29L004UL **EliteMT** F49L004UA, F49L004BA **IMT** IM29LV004T, IM29LV004B **Macronix** MX29LV002CT, MX29LV002CB, MX29LV002CNT, MX29LV002CNB, MX29LV004T, MX29LV004B **Mosel Vitelic** V29C31004T, V29C31004B **SyncMos** F29C31004T, F29C31004B, S29C31001T, S29C31004T