

Adapter PLCC-32_B2

EzoFlash+ adapter for FWH/LPC memory in PLCC-32 package.

1. Part list.

Q1..Q3 - BC547

D1, D3, D4 - 1N4148 or KD522

D2 - LED 3mm, red

ZD1 - Zener diode BZX55/C5V6

R1..R3 - 10k

R4 - 1k

R5 - 2k2

R6 - 4k7

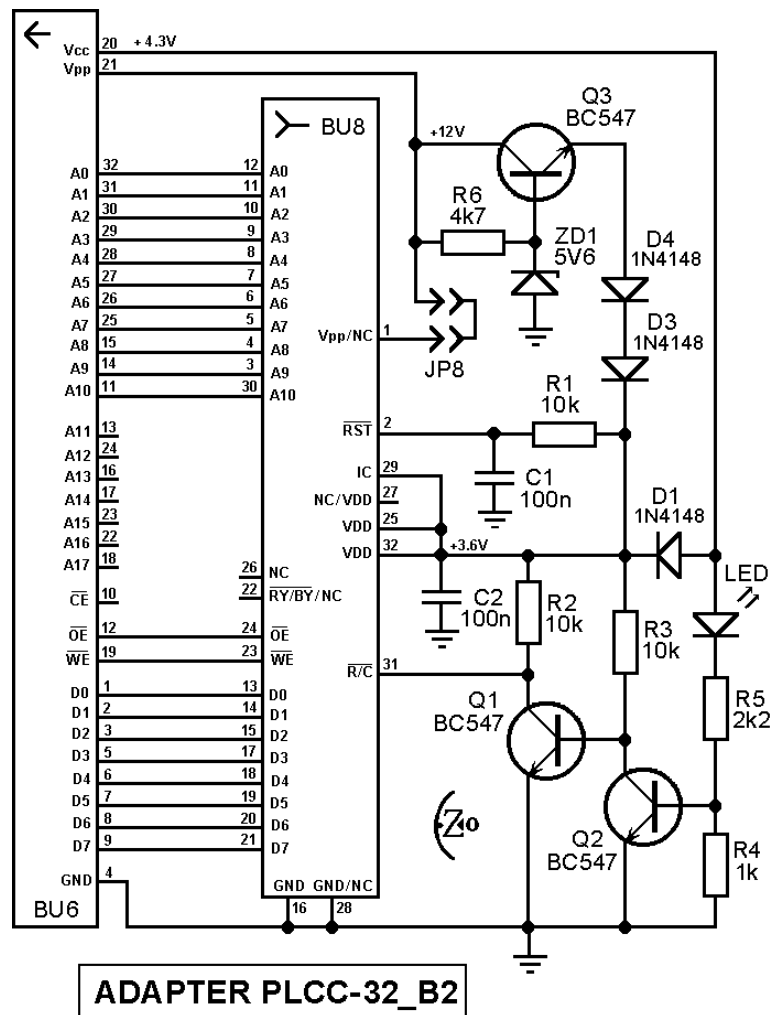
C1, C2 - 100nF

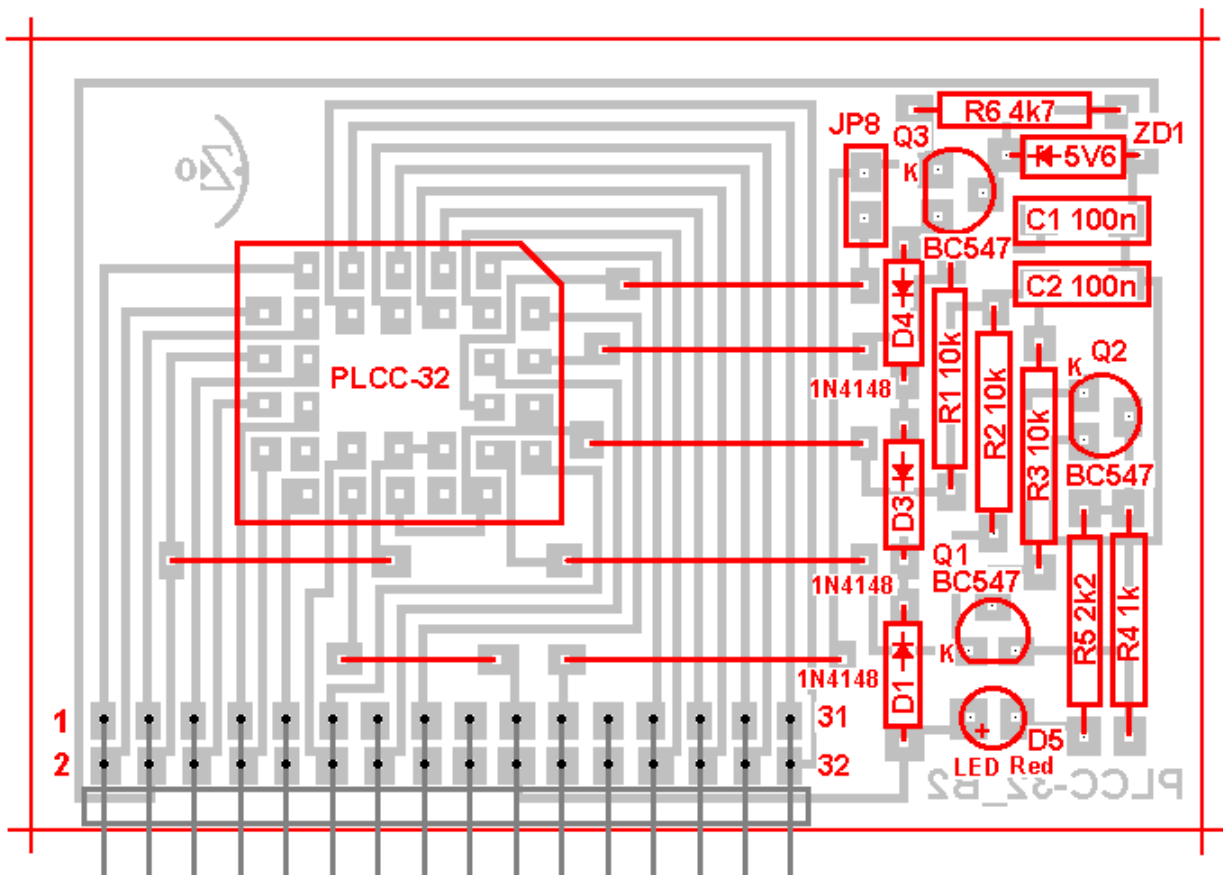
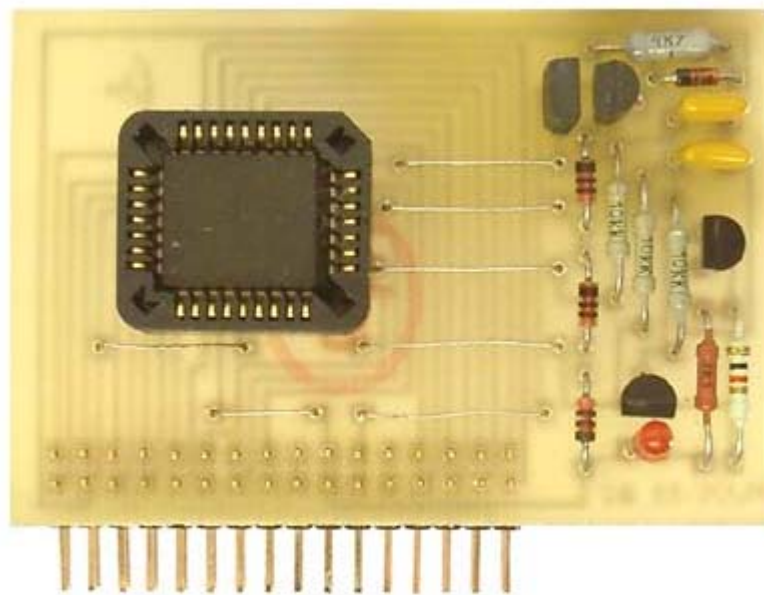
BU6 - Angle dual pin-header 2 x16, division 2.54

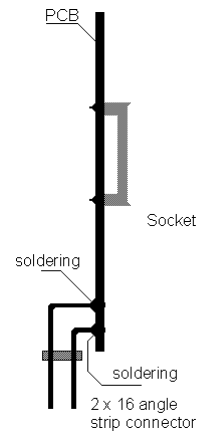
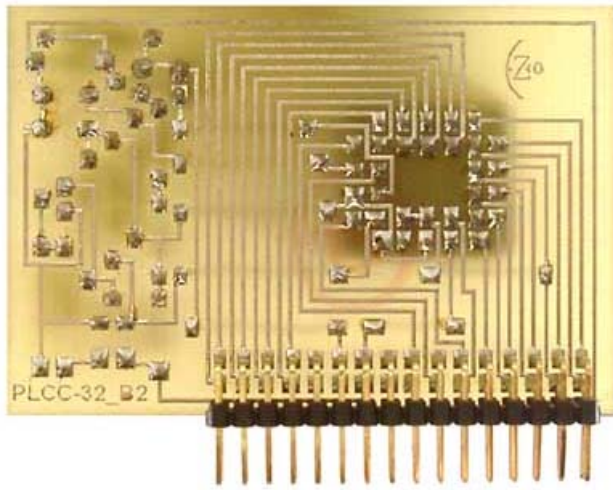
BU8 - PLCC-32 socket

Jp8 - Straight pin-header, division 2.54, 1x3 / Jumper, division 2.54mm

2. Schematic, PCB and pictures







3. Settings, supported chips list

Willem programmer software version 0.97ja or latest.

Verified chips on mentioned adapter are underlined. Details find in chip_test.xls file

Software may not support some chip, report problem in EZoFlash and Willem forums.

Selected device *Firmware HUB/LPC* >...

- Jumpers Jp2 , Jp3 (+4.3V), Jp4 (Vpp), Jp8 (Vpp)

LPC

Amic A50LPW40 **Atmel** AT49LL020, AT49LL040, AT49LL080 **ST Micro** M50LPW002, M50LPW040, M50LPW041, M50LPW080 **Winbond** W39V080A, W39F080B

FWH

Amic A50FW040, A50FW040M **Atmel** AT49LW040, AT49LW080 **Intel** N82802AB, N82802AC **ST Micro** M50FW002, M50FW040, M50FW080 **Winbond** W39V080FA

FWH/LPC

ST Micro M50FLW040A, M50FLW040B, M50FLW080A, M50FLW080B

- Jumpers Jp2 , Jp3 (+4.3V), Jp4 (Vpp)

LPC

Amic A49LF040T **Sharp** LHF00L07 **SST** SST49LF020, SST49LF020A, SST49LF030A, SST49LF040, SST49LF040A, SST49LF040B, SST49LF080A, SST49LF016C **Winbond** W49V002, W49V002A, W39V040A

FWH

Amic A49LF004T **Sharp** LHF00L03 **SST** SST49LF002A, SST49LF003A, SST49LF004A, SST49LF008A **Winbond** W49V002FA, W39V040FA, W39V040FB

FWH/LPC

Atmel AT49LH002, AT49LH004 **PMC** PM49FL002, PM49FL004, PM49FL008 **SST** SST49LF002B, SST49LF003B, SST49LF004B

4. Comments

- SW 0.97ja works considerably faster than previous software versions
- Find random programming errors try change R/C delay time or remove capacitor C2 (and C1).
- ST Micro chip (M50FW040) programm/verify fails on verify. Chip is programmed, start separately action Verify.