

Adapter PSOP-44A

EzoFlash+ adapter for 8/16 bit flash memory in PSOP-44 package.

1. Part list.

BU5 - Straight pin-header, division 2.54mm, 2x16

BU7 - Straight pin-header, division 2.54mm, 1x5

JP7 / JP8 - Straight pin-header, division 2.54mm, 1x3 / Jumper, division 2.54mm

Jp10 / Jp11- Straight pin-header, division 2.54mm, 1x3 / Jumper, division 2.54mm

R1 - 2k2

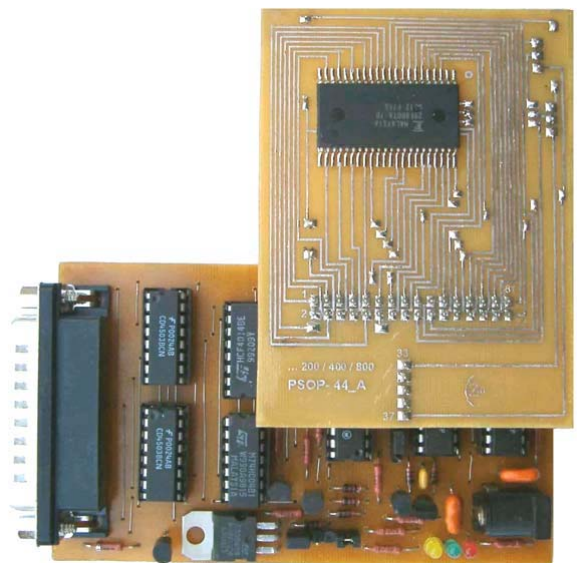
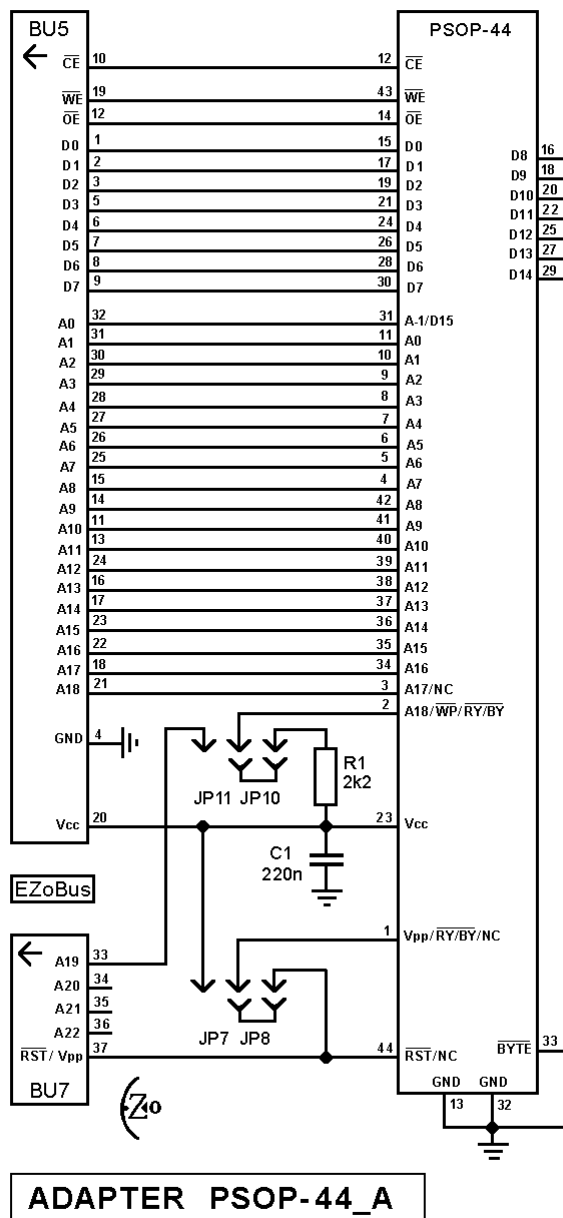
C1 - 220nF

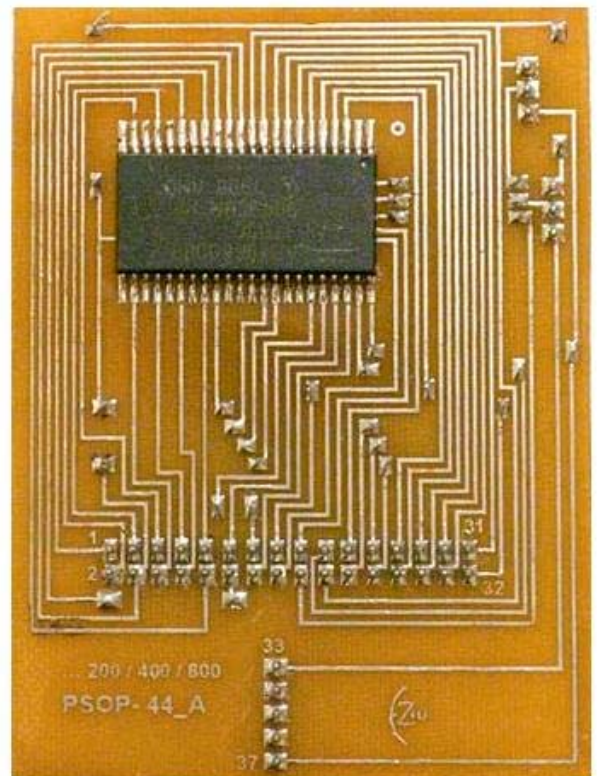
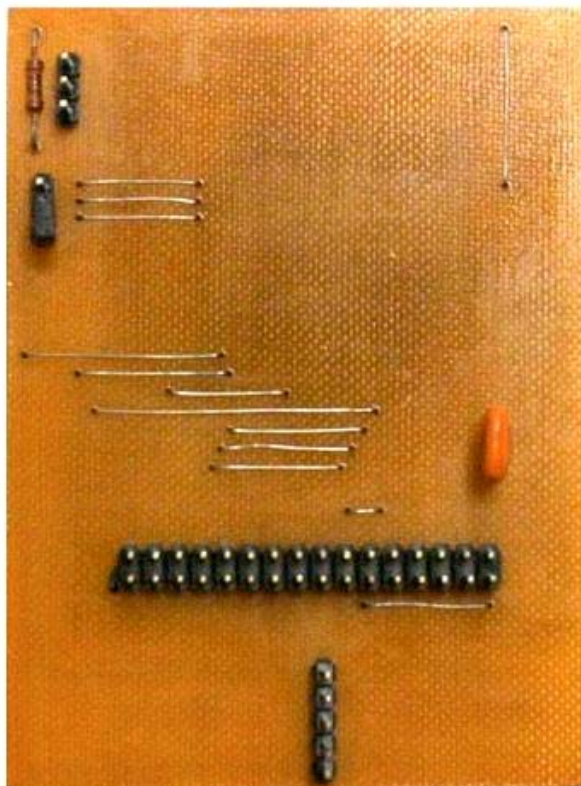
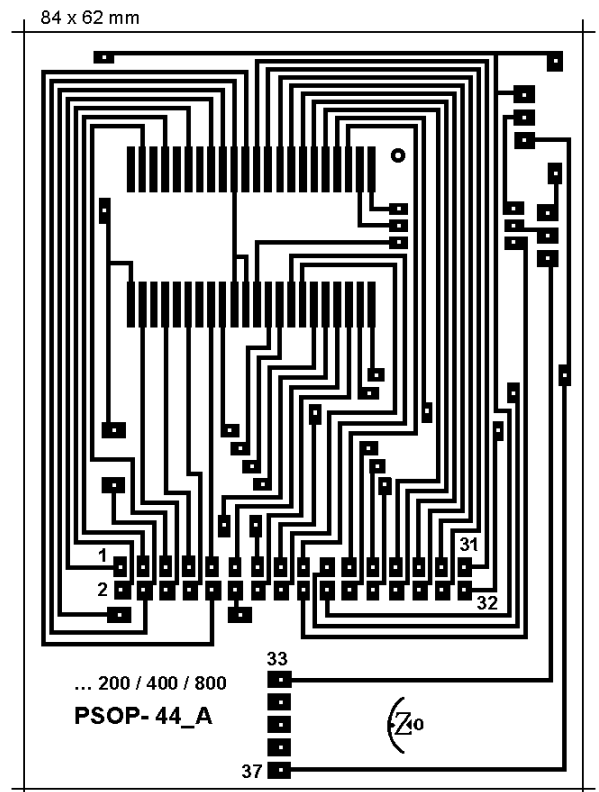
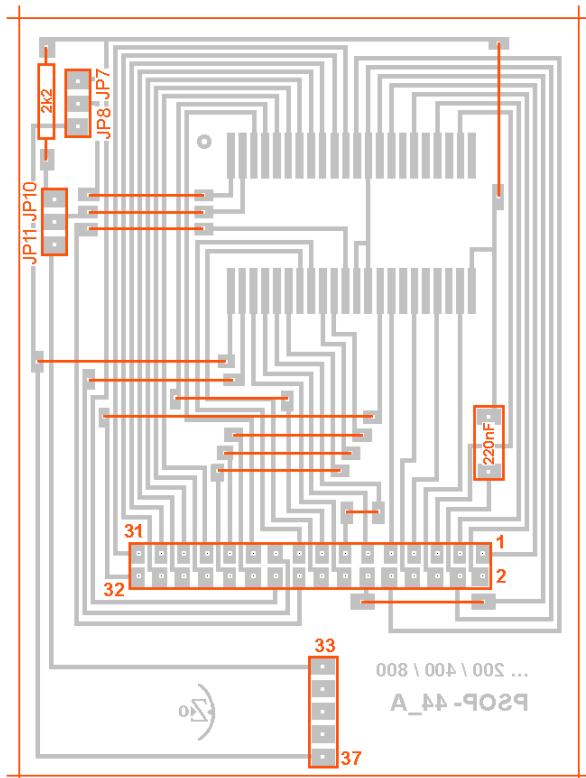
Optional:

Surface Mount 1.27mm PSOP-44 Socket Meritec 980021-44-01

Solder chip on adapter contactpads or apply socket.

2. Schematic, PCB and pictures





3. Supported chip list

Willem programmer software version 0.97g or latest.

Verified chips on mentioned adapter are underlined. Details find in chip_test.xls file

Software may not support some chip, report problem in Willem/EZoFlash forums.

GROUP B (Top or Bottom Boot Block)

Selected device group

Flash 29/39/49Fxxx > 29Fx00 8/16bit > ...;

Flash 29/39/49Fxxx > 29Fx00 8/16bit > AT49Fxxx 8/16bit> ..;

Adapter 3.3V > 29VF/39LF/VF/49LFxxx > 29LVx00 (8/16bit)> ..

- Vcc=5V. Jumpers Jp1, Jp3 (+5V), Jp5 (A18).

Alliance AS29F200T, AS29F200B **AMD** AM29F100T, AM29F100B, AM29F200T, AM29F200B, AM29F200AT, AM29F200AB, AM29F200BT, AM29F200BB, AM29F400T, AM29F400B, AM29F400AT, AM29F400AB, AM29F400BT, AM29F400BB **Amic** A29400TM, A29400UM **Atmel** AT49F2048A, AT49F4096A **Fujitsu** (MBM) 29F200T, 29F200B, 29F200TC, 29F200BC, 29F400T, 29F400B, 29F400TA, 29F400BA, 29F400TC, 29F400BC **Hynix** HY29F400T, HY29F400B, HY29F400AT, HY29F400AB **Macronix** MX29F100T, MX29F100B, MX29F200T, MX29F200B, MX29F400T, MX29F400B, SGS/ST Micro M29F100T, M29F100B, M29F100BT, M29F100BB, M29F200T, M29F200B, M29F200BT, M29F200BB, M29F400T, M29F400B, M29F400BT, M29F400BB **Texas Instr.** TMS29F400T, TMS29F400B **Toshiba** TC58F400, TC58F401

- **8Mbit**. Vcc=5V. Jumpers Jp1, Jp3 (+5V), Jp5 (A18), Jp11(pin2-A18).

AMD AM29F800T, AM29F800B, AM29F800BT, AM29F800BB **Amic** A29800TM, A29800UM **Atmel** AT49F8192, AT49F8192T, AT49F8192A, AT49F8192AT **Fujitsu** (MBM) 29F800T, 29F800B, 29F800TA, 29F800BA **Hynix** HY29F800T, HY29F800B, HY29F800AT, HY29F800AB **Macronix** MX29F800T, MX29F800B **SGS/ST Micro** M29F800AT, M29F800AB, M29F800DT, M29F800DB

- Vcc=2.7-3.6V. Jumpers Jp2 (+3.6V), Jp5 (A18)

Alliance AS29LV400T, AS29LV400B **AMD** AM29LV200T, AM29LV200B, AM29LV200BT, AM29LV200BB, AM29LV400T, AM29LV400B, AM29LV400BT, AM29LV400BB, AM29DL400BT, AM29DL400BB **Amic** A29L400TM, A29L400UM **Atmel** AT49LV2048A, AT49BV2048A, AT49LV4096A, AT49BV4096A **ESI** ES29LV400DT, ES29LV400DB **Fujitsu** (MBM) 29LV200T, 29LV200B, 29LV200TA, 29LV200BA, 29LV200TC, 29LV200BC, 29LV400T, 29LV400B, 29LV400TA, 29LV400BA, 29LV400TC, 29LV400BC **Hynix** HY29LV400T, HY29LV400B, HY29LV400AT, HY29LV400AB **LinkSmart** L29S400, L29S400-B **Macronix** MX29LV400T, MX29LV400B, MX29LV401T, MX29LV401B, **SGS/ST Micro** M29W200BT, M29W200BB, M29W400T, M29W400B, M29W400BT, M29W400BB, M29W400DT, M29W400DB **Toshiba** TC58FVT400, TC58FVB400

- **8Mbit**. Vcc=2.7-3.6V. Jumpers Jp2 (+3.6V), Jp5 (A18), Jp11(pin2-A18).

Alliance AS29LV800T, AS29LV800B **AMD** AM29LV800T, AM29LV800B, AM29LV800BT, AM29LV800BB, AM29LV800DT, AM29LV800DB, AM29DL800BT, AM29DL800BB **Amic** A29L800TM, A29L800UM **ESI** ES29LV800DT, ES29LV800DB **Fujitsu** (MBM) 29LV800T, 29LV800B, 29LV800TA, 29LV800BA, 29LV800TB, 29LV800BB **Hynix** HY29LV800T, HY29LV800B, HY29LV800AT, HY29LV800AB **Macronix** MX29LV800T, MX29LV800B, MX29LV800AT, MX29LV800AB, MX29LV800BT, MX29LV800BB **SGS/ST Micro** M29W800T, M29W800B, M29W800AT, M29W800AB, M29W800DT, M29W800DB **Texas Instr.** TMS29LF800T, TMS29LF800B **Toshiba** TC58FVT800, TC58FVB800

GROUP E (Vpp, Top or Bottom Boot Block)

Selected device group *Flash 28Fxxx > 28Fx00 8/16bit > ...*

- Vcc=5V, Vpp=12V. Jumpers Jp1, Jp3 (+5V), Jp5 (A18), Jp8 (Vpp=12V)

Intel (PA,AB, TB) 28F002BC, 28F200BXT, 28F200BXB, 28F400BXT, 28F400BXB **Macronix** MX28F2100T, MX28F2100B **SGS** M28F210, M28F220, M28F410, M28F420 **Texas Instr.** TMS28F200BZT, TMS200BZB, TMS28F400BZT, TMS28F400BZB

- Vcc=3.3V, Vpp=12V. Jumpers Jp2 (+3.6V), Jp5 (A18), Jp8 (Vpp=12V)

Intel (PA,AB, TB) 28F200BLT, 28F200BLB

- Vcc=5V, Vpp=5.0/12V.

Jumpers Jp1, Jp3 (+5V), Jp5 (A18), Jp7 (Vpp=5V), Jp10 (pin2-WP#) or

Jumpers Jp1, Jp3 (+5V), Jp5 (A18), Jp8 (Vpp=12V), Jp10 (pin2-WP#)

Intel (PA,AB,TB) 28F200B5T, 28F200B5B, 28F400B5T, 28F200BRT, 28F200BRB, 28F400B5B, 28F400BRT, 28F400BRB, 28F400BXT **Micron** MT28F200B5SG-T, MT28F200B5SG-B, MT28F400B5SG-T, MT28F400B5SG-B

- 8Mbit. Vcc=5V, Vpp=5.0/12V.
Jumpers Jp1, Jp3 (+5V), Jp5 (A18), Jp7 (Vpp=5V), Jp11 (pin2-A18) or
Jumpers Jp1, Jp3 (+5V), Jp5 (A18), Jp8 (Vpp=12V), Jp11 (pin2-A18)

Intel (PA,AB,TB) 28F800B5T, 28F800B5B **Sharp** LH28F800BV(H)N-TV, LH28F800BV(H)N-BV

- Vcc=5V, Vpp=5.0V. Jumpers Jp1, Jp3 (+5V), Jp5 (A18), Jp7 (Vpp=5V), Jp11(pin2-A18)

Micron MT28F800B5SG-T, MT28F800B5SG-B **Sharp** LH28F400SU(H)N

- Vcc=3.3V, Vpp=3.3/12V.
Jumpers Jp2 (+3.6V), Jp5 (A18), Jp7 (Vpp=3.6V), Jp10(pin2-WP#) or
Jumpers Jp2 (+3.6V), Jp5 (A18), Jp8 (Vpp=12V), Jp10(pin2-WP#)

Micron MT28F200B3SG-T, MT28F200B3SG-B

- 8Mbit Vcc=3.3V, Vpp=3.3/12V.
Jumpers Jp2 (+3.6V), Jp5 (A18), Jp7 (Vpp=3.6V), Jp11(pin2-A18) or
Jumpers Jp2 (+3.6V), Jp5 (A18), Jp8 (Vpp=12V), Jp11(pin2-A18)

Sharp LH28F800BV(H)N-TTL, LH28F800BV(H)N-BTL

- Vcc=3.3V, Vpp=3.3/5.0V. Jumpers Jp2 (+3.6V), Jp5 (A18), Jp7 (Vpp=3.6V), Jp10(pin2-WP#)

Micron MT28F400B3SG-T, MT28F400B3SG-B

- Vcc=3.3V, Vpp=3.3/5.0V. Jumpers Jp2 (+3.6V), Jp5 (A18), Jp7 (Vpp=3.6V), Jp11(pin2-A18)

Micron MT28F800B3SG-T, MT28F800B3SG-B

- Vcc=3.3/5.0V, Vpp=5.0/12V.
Jumpers Jp2 (+3.6V), Jp5 (A18), Jp8(Vpp=12V), Jp10(pin2-WP#) or
Jumpers Jp1, Jp3 (+5V), Jp8 (Vpp=12V), Jp10(pin2-WP#) or
Jumpers Jp1, Jp3 (+5V), Jp7 (Vpp=5V), Jp10(pin2-WP#)

Intel (PA,AB,TB) 28F200BVT, 28F200BVB, 28F400BVT, 28F400BVB **Micron** MT28F200B1SG-T, MT28F200B1SG-B, MT28F400B1SG-T, MT28F400B1SG-B **Sharp** LH28F400BVN-TL,

LH28F400BVN-BL **Texas Instr.** TMS28F200A-T, TMS28F200A-B, TMS28F400A-T, TMS28F400A-B

- 8Mbit. Vcc=3.3/5.0V, Vpp=5.0/12V.
Jumpers Jp2 (+3.6V), Jp5 (A18), Jp8(Vpp=12V), Jp11(pin2-A18) or
Jumpers Jp1, Jp3 (+5V), Jp8 (Vpp=12V), Jp11(pin2-A18); or
Jumpers Jp1, Jp3 (+5V), Jp7 (Vpp=5V), Jp11(pin2-A18)

Intel (PA,AB,TB) 28F800BVT, 28F800BVB **Micron** MT28F800B1SG-T, MT28F800B1SG-B **Texas Instr.** TMS28F800A-T, TMS28F800A-B