

Adapter PSOP-44C1

EzoFlash+ adapter for 8/16 bit flash memory (high density, page mode) in PSOP-44 package.

1. Part list.

BU5 - Straight pin-header 2x16, division 2.54mm

BU7 - Straight pin-header 1x5, division 2.54mm

JP9...Jp12 - Straight pin-header 1x5, division 2.54mm, / Jumper, division 2.54mm (2pcs)

R1 - 6k8

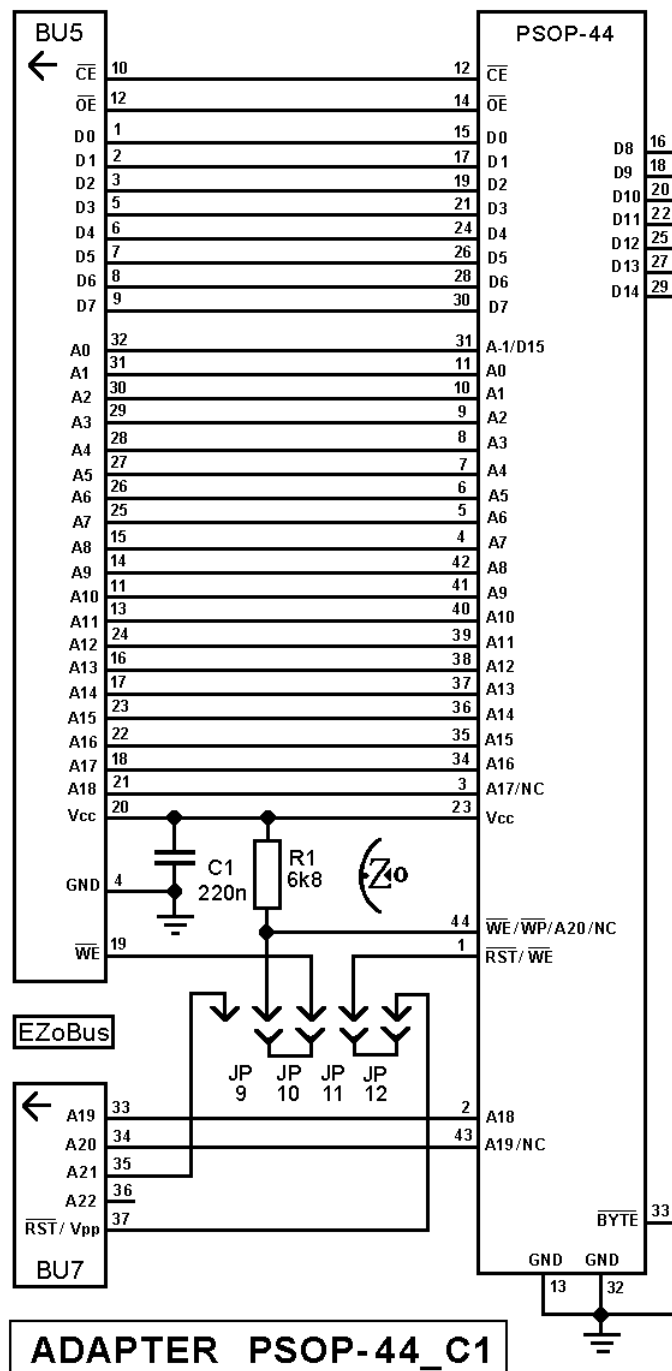
C1 - 220nF

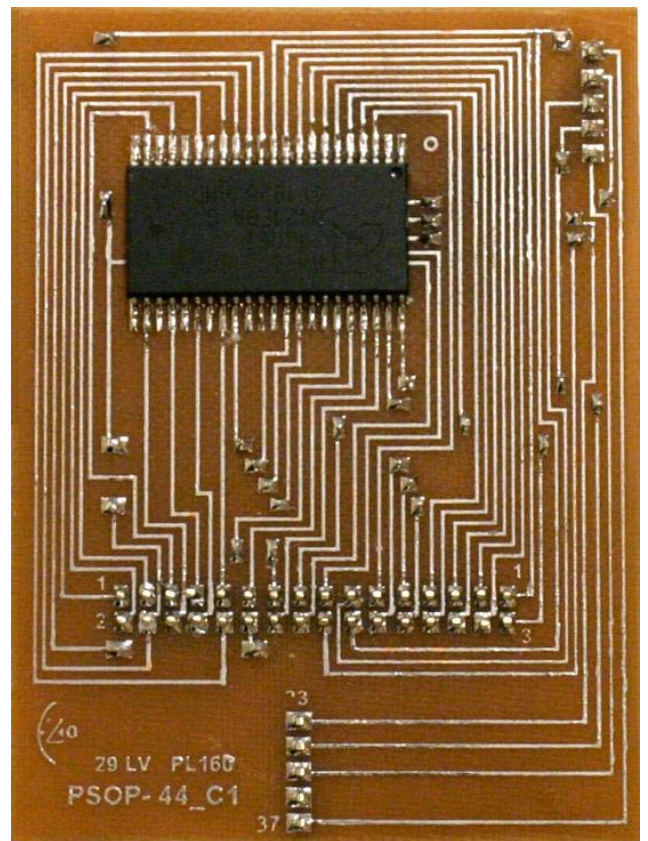
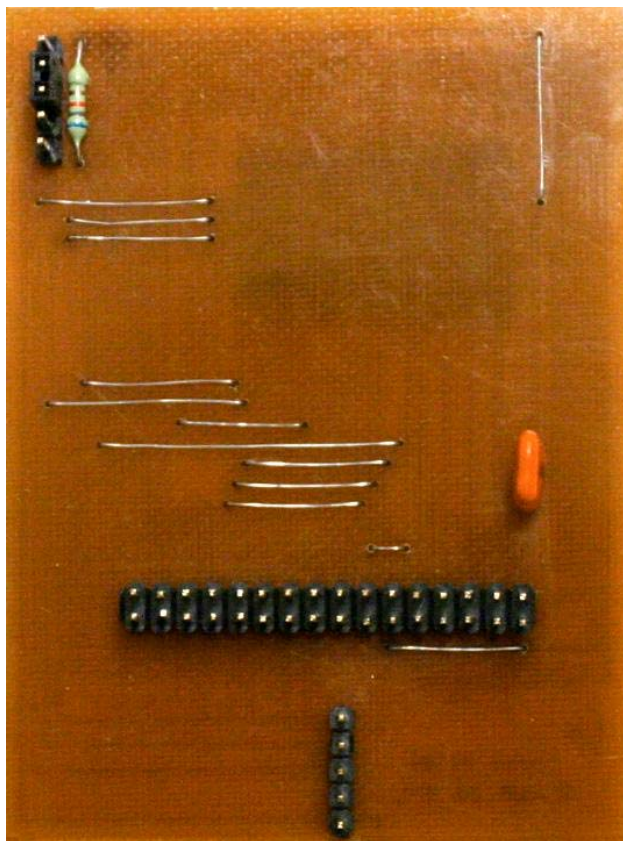
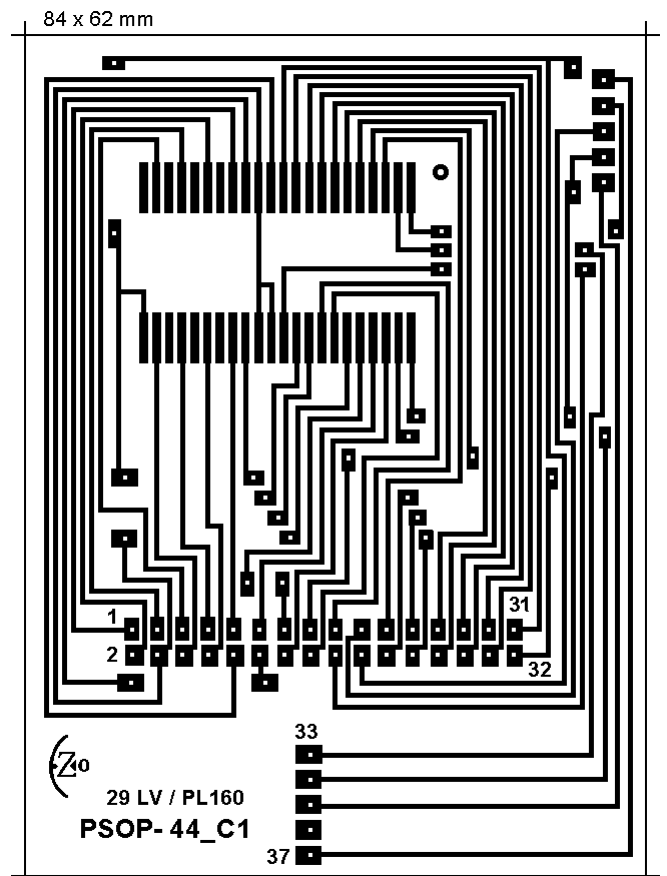
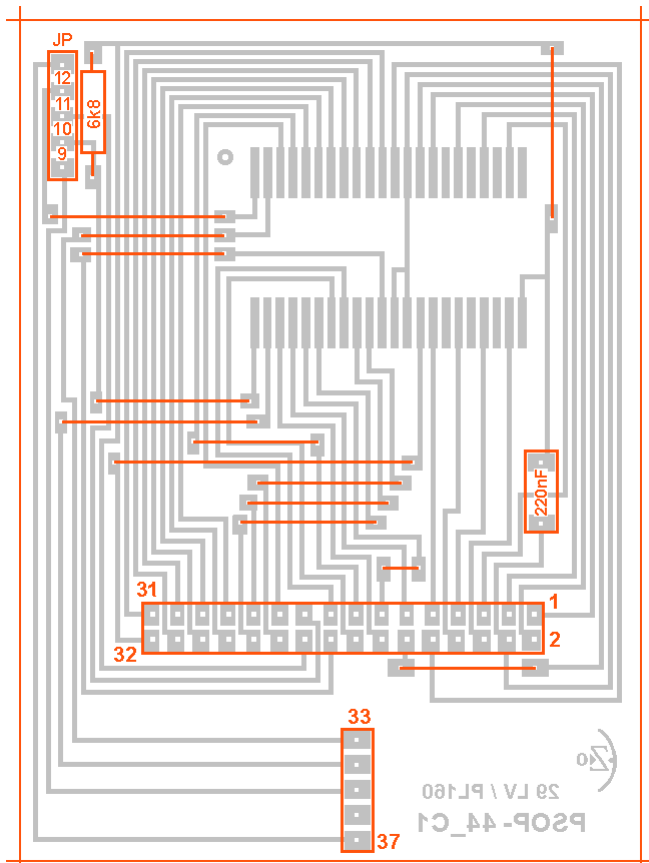
Optional:

Surface Mount 1.27mm PSOP-44 Socket Meritec 980021-44-01

Solder chip on adapter contactpads or apply socket.

2. Schematic, PCB and pictures





3. Supported chip list

Willem programmer software version 0.97ja or latest.

Verified chips on mentioned adapter are underlined. Details find in chip_test.xls file

Software may not support some chip, report problem in Willem/EZoFlash forums.

Selected device group

Adapter 3.3V > 29VF/39LF/VF/49LFxxx > 29LVx00 (8/16bit) > 29LV160

- Vcc=2.7-3.6V. Jumpers Jp2 (+3.6V), Jp5 (A18), Jp10 (pin 44 WE#), Jp12 (pin1 RST#)

Alliance AS29LV160T, AS29LV160B **AMD** AM29LV160BT, AM29LV160BB, AM29LV160DT, AM29LV160DB, AM29LV160MT, AM29LV160MB **Amic** A29L1600T, A29L160U, A29L160AT, A29L160AU **ESI** ES29LV160DT, ES29LV160DB **Macronix** MX29LV160T, MX29LV160B, MX29LV160AT, MX29LV160AB, MX29LV160BT, MX29LV160BB, MX29LV160CT, MX29LV160CB, MX29LV161T, MX29LV161B, MX26LV160T, MX26LV160B, MX26LV160AT, MX26LV160AB **ST Micro** M29W160BT, M29W160BB, M29W160DT, M29W160DB **8Mbit**.

- Vcc=2.7-3.6V. Jumpers Jp2 (+3.6V), Jp5 (A18), Jp11 (pin1 WE#)

AMD AM29PL160CB **Fujitsu** (MBM) 29PL160TD, 29PL160BD

Selected device group

Flash 29/39/49Fxxx > MXIC29Fxxx > MXIC29F1610

Flash 29/39/49Fxxx > 29Fx00 8/16bit > Am29F800, Am29F160 (?)

Adapter 3.3V > 29VF/39LF/VF/49LFxxx > 29LVx00 (8/16bit) > 29LV800, 29LV160, 29LV320 (?)

- Vcc=5V. Jumpers Jp1, Jp3 (+5V), Jp5 (A18), Jp11 (pin1 WE#)

Macronix MX29F8100, MX29F1610, MX29F1610A

- Vcc=2.7-3.6V. Jumpers Jp2 (+3.6V), Jp5 (A18), Jp11 (pin1 WE#)

Macronix MX29L1610T, MX29L1610B, MX29L1611

- Vcc=2.7-3.6V. Jumpers Jp2 (+3.6V), Jp5 (A18), Jp9 (pin44 A20), Jp11 (pin1 WE#)

Macronix MX29L3211