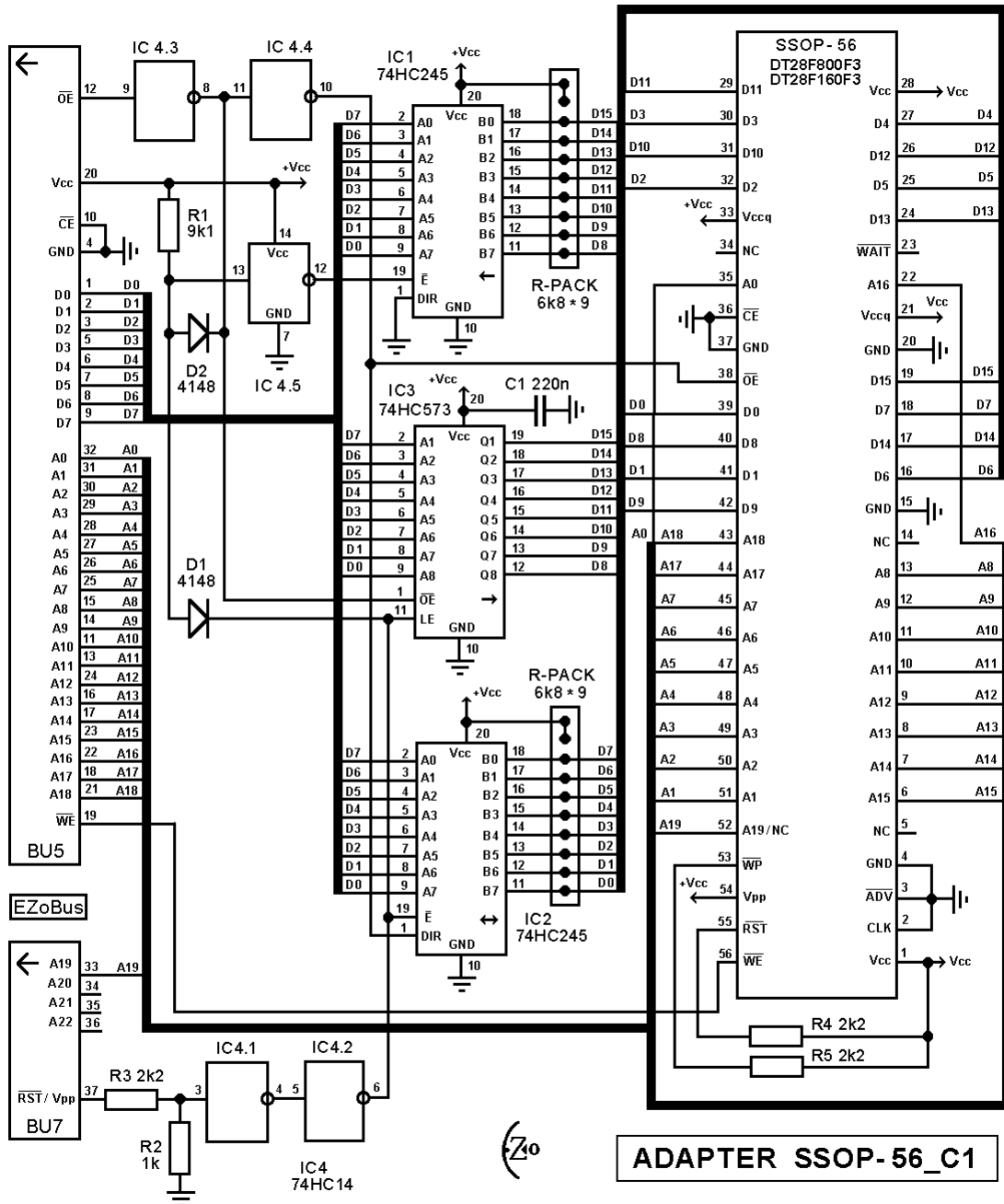


Adapter SSOP-56_C1

EzoFlash+ adapter for 16 bit flash memory DT28F800F3 and DT28F160F3 in SSOP-56 package.

1. Schematic



2. Part list.

IC1, IC2 - 74HC245

IC3 - 74HC573

IC4 - 74HC14

D1, D2 - 1N4148 or KD522

R1 - 9k1 or 10k

R2 - 1k

R3, R4, R5 - 2k2

R-PACK1, R-PACK2 - 6k8 x 9 or 6k8..10k x 8

C1 - 220n

BU5 - Straight pin-header, division 2.54 , 2 x16

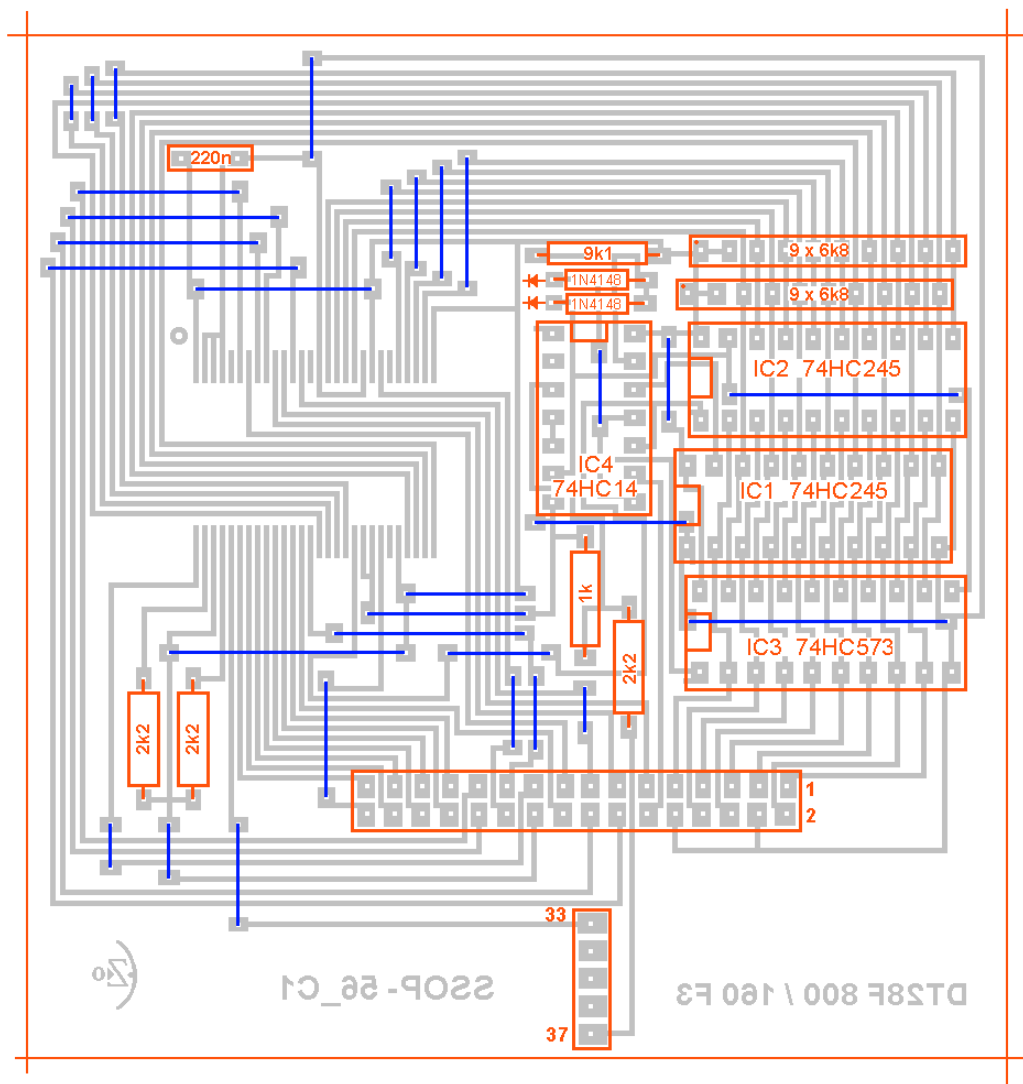
BU7 - Straight pin-header, division 2.54 , 1 x5

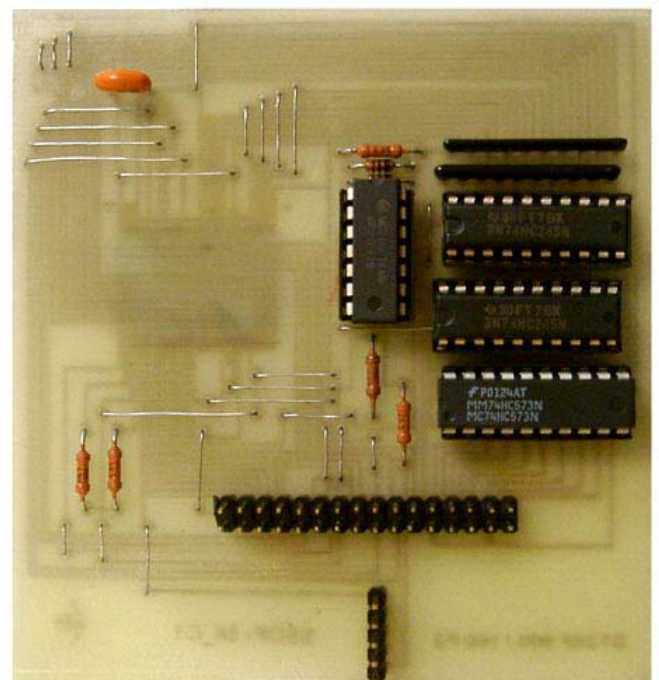
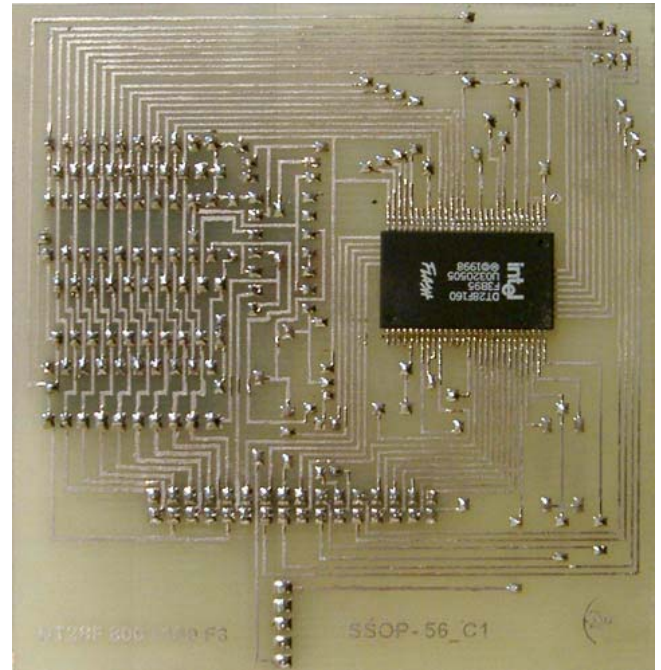
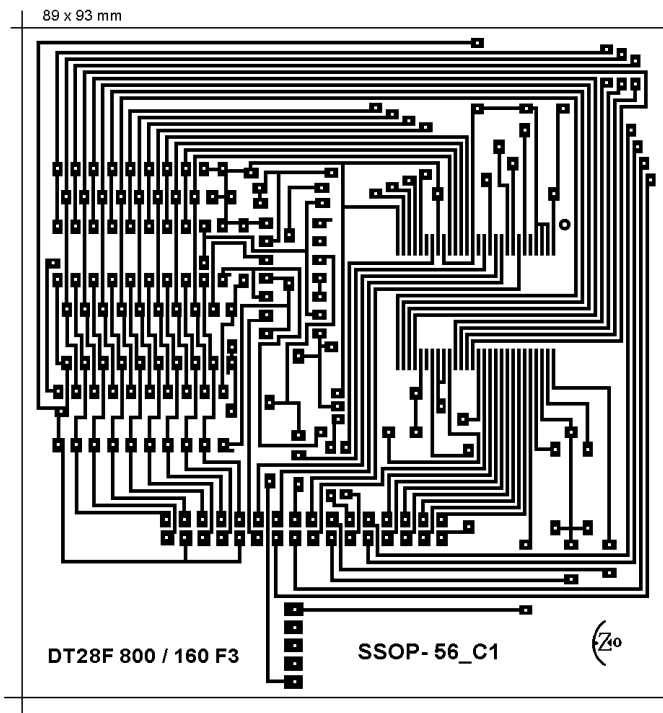
Optional:

Surface Mount 0.8mm SSOP-56 Socket Meritec 980022-56-01

Solder chip on adapter contactpads or apply socket.

3. PCB and pictures





4. Settings, supported chip list

Willem programmer software version 0.97ja or latest.

Verified chips on mentioned adapter are underlined. Details find in chip_test.xls file

Selected device *Flash 16bit (LV)>INTEL 28F×00>* 28F800C3T, 28800C3B, 28F160C3T, 28F160C3B
Vcc=3.3V Jp2 (+3.6V), Jp5(A18)

Intel DT28F800F3T, DT28F800F3B, DT28F160F3T, DT28F160F3B