

## Adapter TSOP-32D

EzoFlash+ adapter for flash memory in TSOP-32 (8x20mm) and VTSOP-32 (8x14mm) packages.

### 1. Part list.

BU5 - Straight pin-header 2 x16, division 2.54

Optional:

Identical Footprint Socket Yamaichi IC197-3202-2000 (for chip 8x20mm)

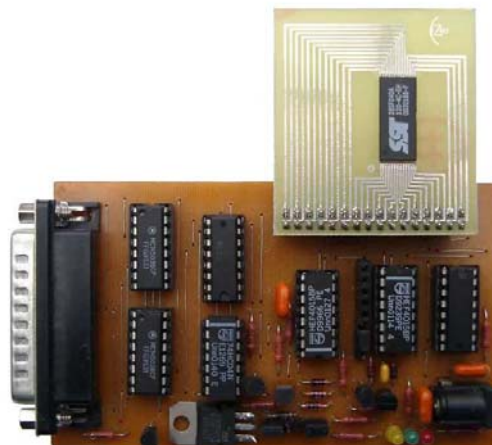
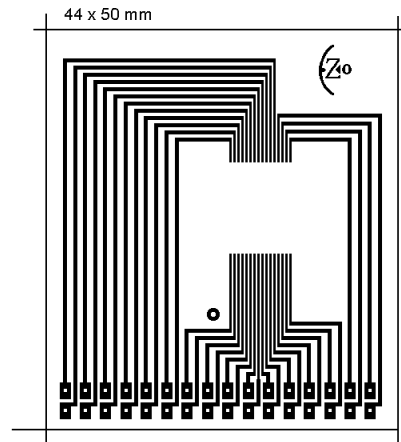
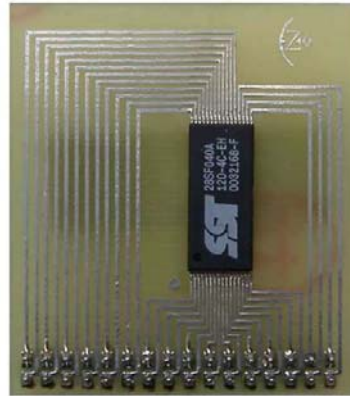
Identical Footprint Socket Yamaichi IC197-3203-2000 (for chip 8x14mm)

Solder chip on adapter contactpads or apply socket.

### 2. Schematic, PCB and pictures

←			
A0	32	20	A0
A1	31	19	A1
A2	30	18	A2
A3	29	17	A3
A4	28	16	A4
A5	27	15	A5
A6	26	14	A6
A7	25	13	A7
A8	15	3	A8
A9	14	2	A9
A10	11	31	A10
A11	13	1	A11
A12	24	12	A12
A13	16	4	A13
A14	17	5	A14
A15	23	11	A15
A16	22	10	A16/NC
A17	18	6	A17/NC
A18 / Vpp / RST	21	9	A18 / Vpp / RST / NC
CE	10	30	CE
GND	4	24	GND
OE	12	32	OE
WE	19	7	WE
Vcc	20	8	Vcc
D0	1	21	D0
D1	2	22	D1
D2	3	23	D2
D3	5	25	D3
D4	6	26	D4
D5	7	27	D5
D6	8	28	D6
D7	9	29	D7
BU5			

ADAPTER TSOP- 32D



### 3. Settings, supported chips list

Willem programmer software version 0.97g , 0.97ja or latest.

Verified chips on mentioned adapter are underlined. Details find in chip\_test.xls file

Software may not support some chip, report problem in Willem forum.

#### **GROUP A (Uniform sectors)**

Selected device group *Flash 29/39/49Fxxx > 29Fxxx, Flash 29/39/49Fxxx > 39/49xxx, 29VF/39LF/49LFxxx > 29/39LV0x0*

- Vcc=5V. Pin9- NC or A18. Jumpers Jp1, Jp3 (+5V), Jp5 (A18).

**Alliance** AS29F010, AS29F040 **AMD** AM29F010, AM29F010A, AM29F010B, AM29F040, AM29F040B **Amic** A29512AV, A29010V, A29040V, A29040AV, A29040BV **Atmel** AT49F512, AT49F010, AT49HF010, AT49F020, AT49F040 **Bright** BM29F020, BM29F040 **EON** EN29F512, EN29F010, EN29F040, EN29F040A **Fujitsu** (MBM) 29F040, 29F040A, 29F040B, 29F040C **Hyundai/Hynix** HY29F040, HY29F040A **Macronix** MX29F040, **Megawin** MM29F040, **Micron** MT29F040A **NexFlash** NX29F010 **PMC** PM39F010, PM39F020, PM39F040 **SST** SST39SF512, SST39SF010, SST39SF010A, SST39SF020A, SST39SF040, SST39SF040A **SGS/ST Micro** M29F512B, M29F010B, M29F040, M29F040B **Texas Instr.** TMS29F040 **Winbond** W39F010

- Vcc=3.3V. Pin9- NC or A18. Jumpers Jp2 (+3.6V), Jp5 (A18).

**Actrans** AC39LV512, AC39LV010, AC39LV020, AC39LV040 **AMD** AM29LV010B, AM29LV040B **Amic** A29L040V, A29L040X **Atmel** AT49BV512, AT49LV010, AT49BV010, AT49HLV010, AT49HBV010, AT49LV020, AT49BV020, AT49LV040, AT49BV040 **EON** EN29LV512, EN29LV010, EN29LV040, EN29LV040J **Macronix** MX29LV040 **Megawin** MM29LF040 **PMC** PM39LV512, PM39LV010, PM39LV020, PM39LV040 **SST** SST39LF512, SST39VF512, SST39LF010, SST39VF010, SST39LF020, SST39VF020, SST39LF040, SST39VF040 **ST Micro** M29W512B, M29W010B, M29W040, M29W040B **Texas Instr.** TMS29LF040, TMS29VF040 **Winbond** W39L512, W39L010, W39L020, W39L040, W39L040A

#### **GROUP B (Vpp, Bulk Erase Flash Memory)**

Selected device group *Flash 28Fxxx > 28Fxxx, Flash 28Fxxx > MX28Fx000A*

- Vcc=5V. Pin9- Vpp=12. Jumpers Jp1, Jp3 (+5V), Jp4 (Vpp).

**AMD** AM28F256, AM28F256A, AM28F512, AM28F512A, AM28F010, AM28F010A, AM28F020, AM28F020A **Catalyst** CAT 28F512, CAT28F010, CAT28F020, **Intel** (TE,E) TE28F010, TE28F020 **ISSI** IS28F010, IS28F020 **Macronix** MX28F1000T, MX28F1000PT, MX28F2000PT **Mitsubishi** M5M28F101, M5M28F101A **SGS/ST Micro** M28F101, M28F201 **Texas Instr.** TMS28F512, TMS28F010A, TMS28F010B, TMS28F020

#### **GROUP C (Small sector size)**

Selected device group *Flash AT29C/29EExxx, Flash 28Fxxx > SST28xF0x0,4001*

- Vcc=5V. Pin9- NC or A18. Jumpers Jp1, Jp3 (+5V), Jp5 (A18).

**Atmel** AT29C512, AT29C010A, AT29C020, AT29C040, AT29C040 (TSOP-40, each corner 2 pins NC), AT29C040A **SST** SST28SF040A, SST29EE512, ST29EE010, EH29EE010, ST29EE020, SST29SF512, SST29SF010, SST29SF020, SST29SF040 **Winbond** W29C512, W29C512A, W29C020, W29C020C, W29C022, W29C040T, W29D040C, W29EE512, W29EE011 **Sanyo** LE28C1001DT, LE28F4001CTS,

- Vcc=3.3V. Pin9- NC or A18. Jumpers Jp2 (+3.6V), Jp5 (A18).

**Atmel** AT29LV512, AT29LV010A, AT29BV010A, AT29LV020, AT29BV020, AT29LV040A, AT29BV040A **SST** SST28VF040A, SST29LE512, SST29LE010, EH29LE010, SST29LE020, SST29VE512, SST29VE010, SST29VE020, SST29VF512, SST29VF010, SST29VF020, SST29VF040 **Sanyo** LE28CV1001DT, LE28CW1001DT, LE28FV4001CTS

#### **GROUP D (Top or Bottom Boot Block)**

Selected device group *Flash 29/39/49Fxxx > 29/49F00x, Flash 29/39/49Fxxx > MXIC29Fxxx*

*29VF/39LF/49LFxxx > 29/39LV0x0 > SyncMosF29C3100x*

- Vcc=5V. Pin9- Reset or NC. Jumpers Jp1, Jp3 (+5V), Jp4 (RST).

**Alliance** AS29F002T, AS29F002B **AMD** AM29F002T, AM29F002B, AM29F002NT, AM29F002NB, AM29F002BT, AM29F002BB, AM29F002NBT, AM29F002NBB **Amic** A29001TV, A29001UV,

A29011TV, A29011UV, A29002TV, A29002UV, A290021TV, A290021UV **Atmel** AT49F001, AT49F001T, AT49F001N, AT49F001NT, AT49F002, AT49F002T, AT49F002N, AT49F002NT, AT49F002A, AT49F002AT, AT49F002AN, AT49F002ANT **EON** EN29F001T, EN29F001B, EN29F001NT, EN29F001NB, EN29F002T, EN29F002B, EN29F002NT, EN29F002NB, EN29F002AT, EN29F002AB, EN29F002ANT, EN29F002ANB **Fujitsu** (MBM) 29F002T, 29F002B, 29F002TC, 29F002BC **Hynix** HY29F002T, HY29F002B **IMT** IM29F001T, IM29F001B, IM29F002T, IM29F002B **Macronix** MX29F001T, MX29F001B, MX29F002T, MX29F002B, MX29F002NT, MX29F002NB, MX29F022T, MX29F022B, MX29F022NT, MX29F022NB **Mosel Vitelic** V29C51000T, V29C51000B, V29C51001T, V29C51001B, V29C51002T, V29C51002B, **PMC** PM29F002T, PM29F002B **SGS/ST Micro** M29F002T, M29F002B, M29F002NT, M29F002NB, M29F002BT, M29F002BB, M29F002BNT, M29F002BNB **SyncMos** F29C51000T, F29C51000B, F29C51001T, F29C51001B, F29C51002T, F29C51002B, S29C51000T, S29C51001T, S29C51001B, S29C51002T **Winbond** W49F002, W49F002B, W49F002U, W49F002N, W49F020T

- Vcc=5V. Pin9-A18, 4Mb. Jumpers Jp1, Jp3 (+5V), Jp5 (A18).

**Fujitsu** MBM29F004TC, MBM29F004BC, **IMT** IM29F004T, IM29F004B, **Mosel Vitelic** V29C51004T, V29C51004B, **SyncMos** F29C51004T, F29C51004B, S29C51004T

- Vcc=3.3V. Pin9- Reset or NC. Jumpers Jp2 (+3.6V), Jp4 (RST)

**AMD** AM29LV001BT, AM29LV001BB **Atmel** AT49LV001, AT49LV001N, AT49LV001T, AT49LV001NT, AT49BV001, AT49BV001N, AT49BV001T, AT49BV001NT, AT49LV002, AT49LV002N, AT49LV002T, AT49LV002NT, AT49BV002, AT49BV002N, AT49BV002T, AT49BV002NT, AT49BV002A, AT49BV002AN, AT49BV002AT, AT49BV002ANT **IMT** IM29LV001T, IM29LV001B **ST Micro** M29W022BT, M29W022BB

- Vcc=3.3V. Pin9- A18, 4Mb. Jumpers Jp2 (+3.6V), Jp5 (A18)

**Amic** A29L004TV, A29L004UV, A29L004TX, A29L004UX **IMT** IM29LV004T, IM29LV004B **Mosel Vitelic** V29C31004T, V29C31004B **SyncMos** F29C31004T, F29C31004B, S29C31004T