

Adapter TSOP-32_E1

EzoFlash+ adapter for FWH/LPC memory in TSOP-32 (8x14mm) package.

1. Part list.

Q1..Q3 - BC547

D1, D3, D4 - 1N4148 or KD522

D2 - LED 3mm, red

ZD1 - Zener diode BZX55/C5V6

R1..R3 - 10k

R4 - 1k

R5 - 2k2

R6 - 4k7

C1, C2 - 100nF

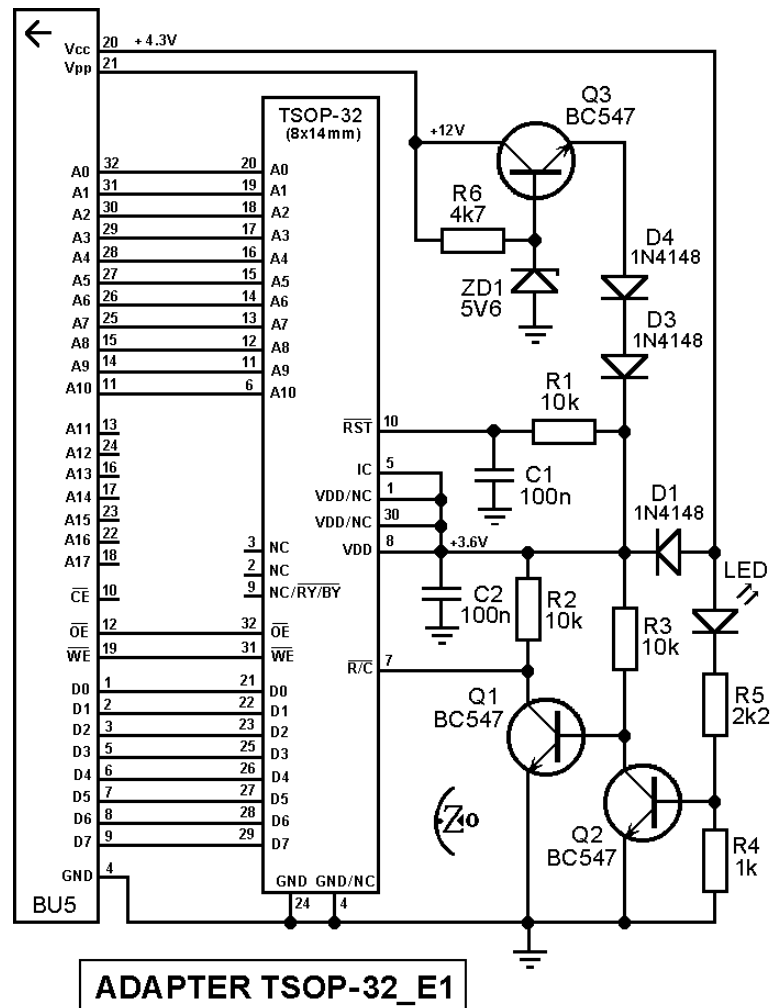
BU5 - Straight pin-header 2 x16, division 2.54

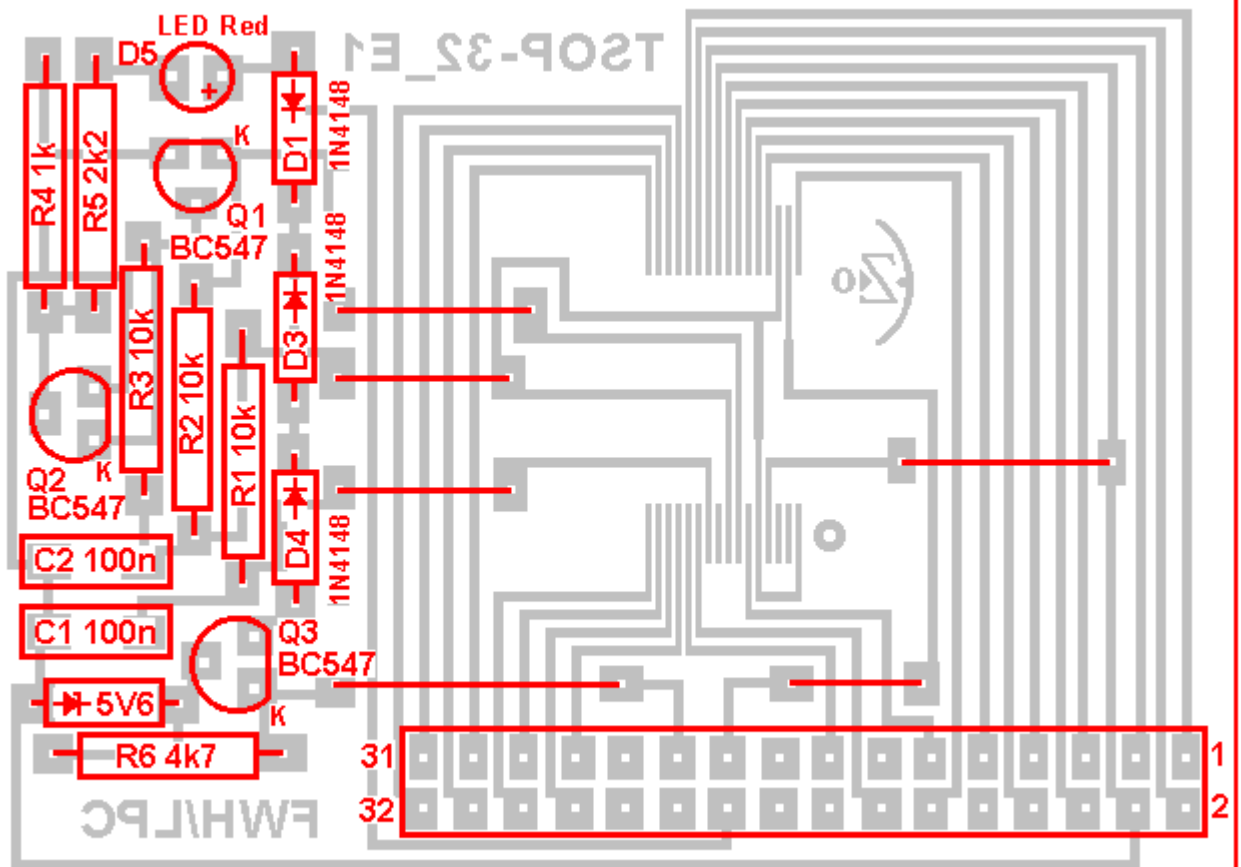
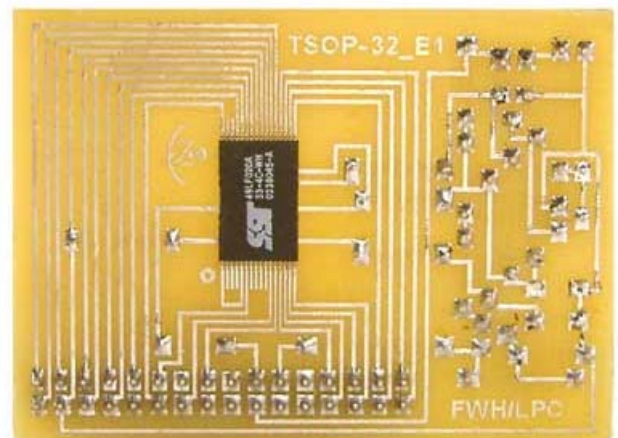
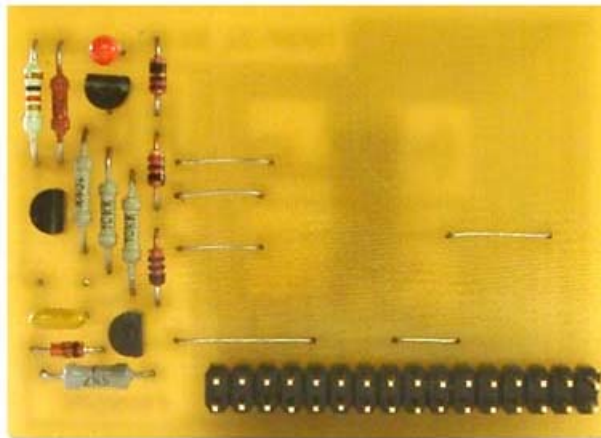
Optional:

Identical Footprint Socket Yamaichi IC197-3203-2000 (for chip 8x14mm)

Solder chip on adapter contactpads or apply socket.

2. Schematic, PCB and pictures





3. Settings, supported chips list

Willem programmer software version 0.97ja or latest.

Verified chips on mentioned adapter are underlined. Details find in chip_test.xls file

Software may not support some chip, report problem in EZoFlash and Willem forums.

Jumpers Jp2 , Jp3 (+4.3V), Jp4 (Vpp)

Selected device *Firmware HUB/LPC* > ...

LPC

Amic A49LF040T, A50LPW040 **Sharp** LH28F008BJT-WTL, LHF00L01, LHF00L02 **SST** SST49LF020, SST49LF020A, SST49LF030A, SST49LF040, SST49LF040A, SST49LF080A, SST49LF016C **Winbond** W49V002, W49V002A, W39V040A, W39V080A, W39V080B

FWH

Amic A49LF004T, A50FW040, A50FW040M **Sharp** LHF00L05 **SST** SST49LF002A, SST49LF003A, SST49LF004A, SST49LF008A **Winbond** W49V002FA, W39V040FA, W39V040FB, W39V080FA

FWH/LPC

PMC PM49FL002, PM49FL004, PM49FL008 **ST Micro** M50FLW080A, M50FLW080B

4. Comments

- SW 0.97ja works considerably faster than previous software versions
- Find random programming errors try change R/C delay time or remove capacitor C2 (and C1).