

## Adapter TSOP-40\_A3

EzoFlash+ adapter for 8 bit flash memory in TSOP-40 package.

### 1. Part list.

BU5 – Straight pin-header, division 2.54, 2x16

BU7 – Straight pin-header, division 2.54, 1x5

C - 220nF R – 2k2

Jp7, Jp8 - Straight pin-header, division 2.54, 1x3 / Jumper, division 2.54mm

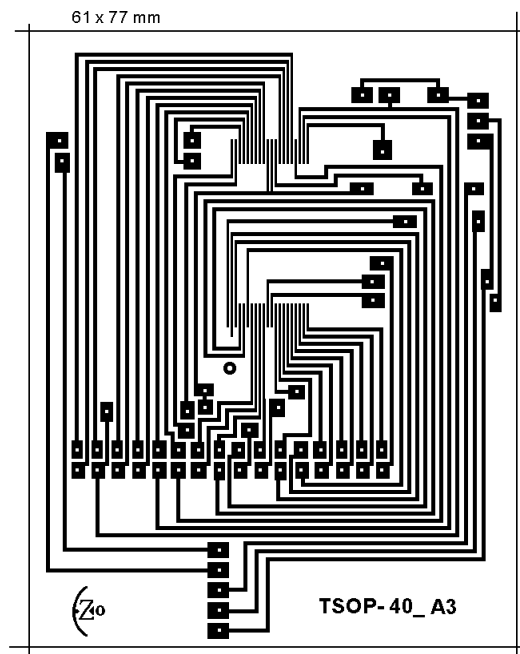
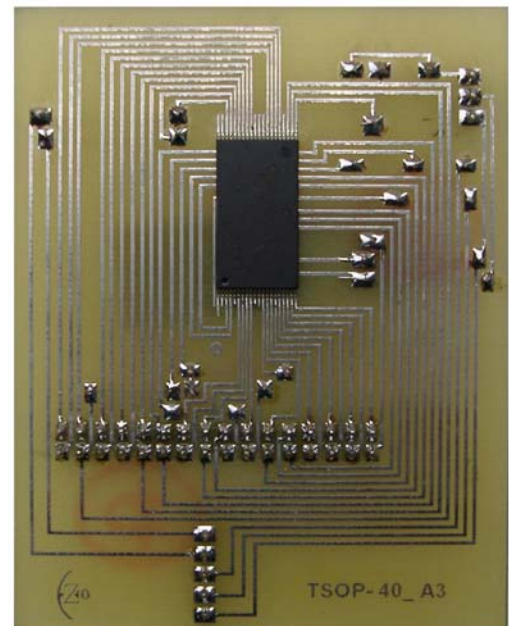
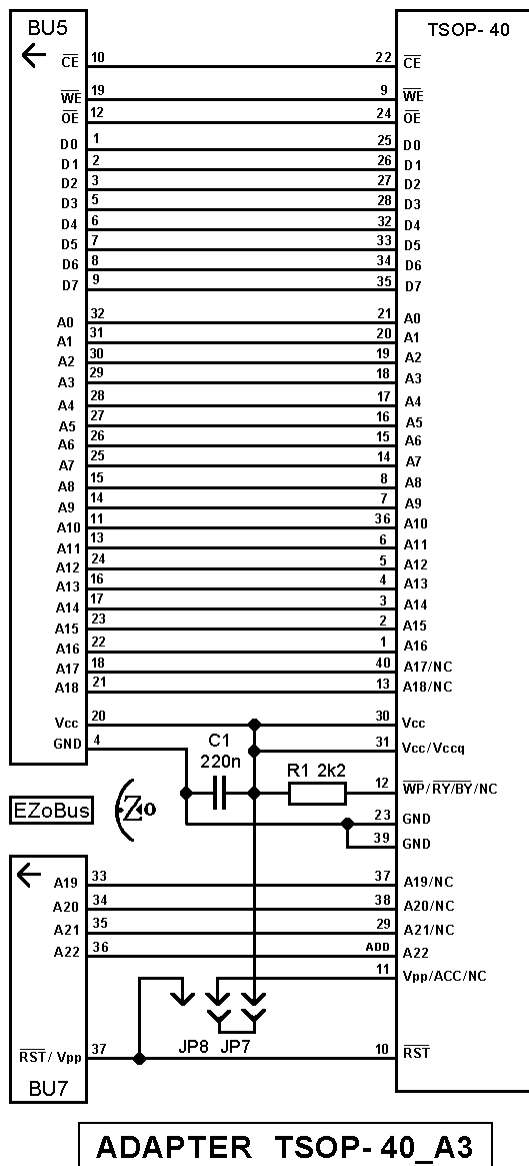
Optional:

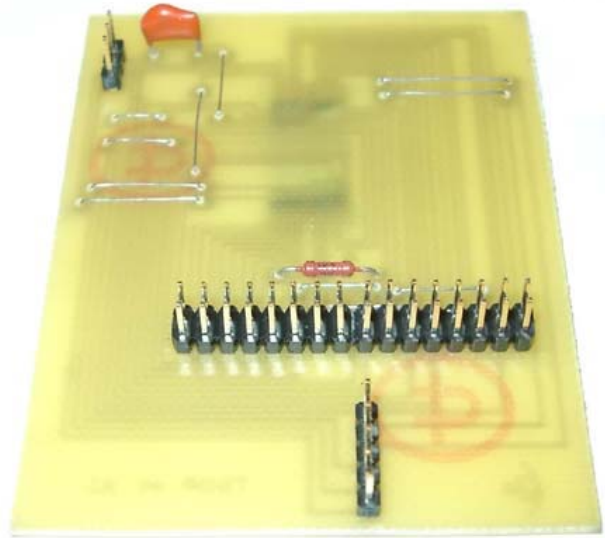
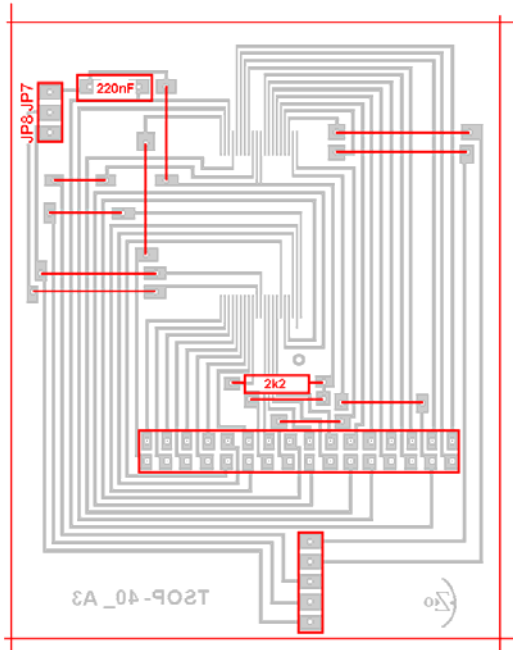
Surface Mount 0.5mm TSOP-40 Socket Meritec 980020-40-01

Solder chip on adapter contactpads or apply socket.

Adapter contactpad pin 0 (ADD) is used for chips in TSOP-48package.

### 2. Schematic, PCB and pictures





### 3. Settings, supported chip list

Willem programmer software version 0.97ja or latest.

Verified chips on mentioned adapter are underlined. Details find in chip\_test.xls file

Software may not support some chip, report problem in Willem/EZoFlash forums.

#### GROUP A (Uniform sectors)

Selected device group *Flash 29/39/49Fxxx > M29F0x0 TSOP40 > ...*

- Vcc=3.3V. Jumpers Jp2 (3.6V), Jp5 (A18)

**AMD** AM29LV081, AM29LV081B, AM29LV017B, AM29LV017D, AM29LV017M, AM29LV033C, AM29LV033MU, AM29LV065D (TSOP-48), AM29LV065M (TSOP-48) **Fujitsu** MBM29LV017, **Macronix** MX29LV081, MX29LV081B, MX29LV017A, MX29LV033, MX29LV033A, MX29LV033M, MX29LV065 (TSOP-48), MX29LV065B (TSOP-48), MX29LV065M (TSOP-48) **Spansion** S29GL032M..-R0, S29GL064M..-R0 (TSOP-48) **ST Micro** M29W017D **SST** SST39LF080, SST39VF080, SST39LF016, SST39VF016

#### GROUP D (Top or Bottom Boot Block)

Selected device group *Flash 29/39/49Fxxx > M29F0x0 TSOP40 > ...*

- Vcc=5V. Jumpers Jp1, Jp3 (5V), Jp5 (A18).

**Alliance** AS29F002T, AS29F002B, **Atmel** AT49F008, AT49F008A, AT49F008AT, **Fujitsu** MBM29F002ST, MBM29F002SB

- Vcc=3.3V. Jumpers Jp2 (3.6V), Jp5 (A18)

**AMD** AM29LV002T, AM29LV002B, AM29LV002BT, AM29LV002BB, AM29LV004T, AM29LV004B, AM29LV004BT, AM29LV004BB, AM29LV008T, AM29LV008B, AM29LV008BT, AM29LV008BB, AM29LV116BT, AM29LV116BB, AM29LV116DT, AM29LV116DB, AM29LV116MT, AM29LV116MB **Amic** A29L004T, A29L004U, A29L004AT, A29L004AU, A29L008T, A29L008U, A29L008AT, A29L008AU **Atmel** AT49BV008, AT49BV008A, AT49BV008AT, AT49LV008, AT49LV008A, AT49LV008AT **EliteMT** F49L004UA, F49L004BA **Fujitsu** (MBM) 29LV002T, 29LV002B, 29LV002TC, 29LV002BC, 29LV004T, 29LV004B, 29LV008T, 29LV008B, 29LV008TA, 29LV008BA, 29LV016T, 29LV016B **Macronix** MX29LV004T, MX29LV004B, MX29LV008T, MX29LV008B, MX29LV008BT, MX29LV008BB, MX29L8000T, MX29L8000B **ST Micro** M29W002BT, M29W002BB, M29W004T, M29W004B, M29W004BT, M29W004BB, M29W008T, M29W008B, M29W008AT, M29W008AB **Texas Instr.** TMS29LF008T, TMS29LF008B **Toshiba** TC58FVT004, TC58FVB004, TC58FVT008, TC58FVB008, TC58FVT016, TC58FVB016

#### **GROUP E (Vpp, Top or Bottom Boot Block)**

Selected device group *Flash 28Fxxx > 28F00x 8bit > ...*

- Vcc=5V, Vpp=12V. Jumpers Jp1, Jp3 (5V), Jp5 (A18), Jp8 (Vpp=12V)

**Catalyst** CAT28F002T-T, CAT28F002T-B, **Intel** (TE, E) TE28F002BC, TE28F002BXT, TE28F002BXB, TE28F004BXT, TE28F004BXB, Micron MT28F002C5-T **Macronix** MX28F002T, MX28F002B **SGS/ST Micro** M28F211, M28F221, M28F411, M28F421

- Vcc=5V, Vpp=5V. Jumpers Jp1, Jp3 (5V), Jp5 (A18), Jp7 (Vpp=5V)

**Micron** MT28F008B5VG-T, MT28F008B5VG-B

- Vcc=5V, Vpp=5/12V. Jumpers Jp1, Jp3 (5V), Jp5 (A18), Jp7 (Vpp=5V) or Jp8 (Vpp=12)

**Intel** (TE,E) TE28F004B5T, TE28F004B5B, **Micron** MT28F002B5VG-T, MT28F002B5VG-B, MT28F002C1-T, MT28F004B5VG-T, MT28F004B5VG-B

- Vcc=3.3V, Vpp=12V. Jumpers Jp2 (3.6V), Jp5 (A18), Jp8 (Vpp=12V)

**Intel** (TE,E) TE28F002BLT, TE28F002BLB, TE28F004B3T, TE28F004B3B, TE28F008B3T, TE28F008B3B, TE28F016B3T, TE28F016B3B, **Sharp** LH28F008BJ(H)T-T, LH28F008BJ(H)T-B, **SGS/ST Micro** M28W411, M28W421

- Vcc=3.3V, Vpp=3.3/5.0V. Jumpers Jp2 (3.6V), Jp5 (A18), Jp7 (Vpp=3.6V)

**Micron** MT28F004B3VG-T, MT28F004B3VG-B, MT28F008B3VG-T, MT28F008B3VG-B

- Vcc=3.3V, Vpp=3.3/5.0/12V. Jumpers Jp2 (3.6V), Jp5 (A18), Jp7 (Vpp=3.6V) or Jp8 (Vpp=12)

**Micron** MT28F002B3VG-T, MT28F002B3VG-B

- Smart voltage Vcc=3.3/5.0V, Vpp=5/12V.

Jumpers Jp2 (3.6V), Jp5 (A18), Jp8 (Vpp=12V) or

Jumpers Jp1, Jp3 (5V), Jp5 (A18), Jp8 (Vpp=12V) or

Jumpers Jp1, Jp3 (5V), Jp5 (A18), Jp7 (Vpp=5V)

**Intel** (TE,E) TE28F002BVT, TE28F002BVB, TE28F004BET, TE28F004BEB, TE28F004BVT,

TE28F004BVB, TE28F008BET, TE28F008BEB, TE28F008BVT, TE28F008BVB **Micron**

MT28F002B1-T, MT28F002B1-B, MT28F004B1-T, MT28F004B1-B, MT28F008B1-T, MT28F008B1-B

**Texas Instr.** TMS28F002A-T, TMS28F002A-B, TMS28F004A-T, TMS28F004A-B, TMS28F008A-T, TMS28F008A-B

- Symmetrical boot block. Vcc=5V, Vpp=5V. Jumpers Jp1, Jp3 (5V), Jp5 (A18), Jp7 (Vpp=5V)

**Sharp** LH28F004SUT-N, LH28F004SUT-Z