

Adapter TSOP-40_B2

EzoFlash+ adapter for 8 bit flash memory in TSOP-40 package.

1. Part list.

BU5 – Straight pin-header, division 2.54, 2x16

BU7 – Straight pin-header, division 2.54, 1x5

C - 220nF

Jp7, Jp8 - Straight pin-header, division 2.54, 1x3 / Jumper, division 2.54mm

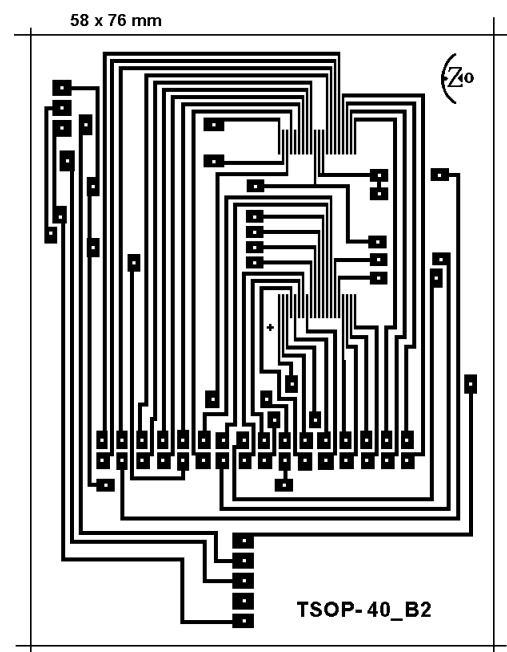
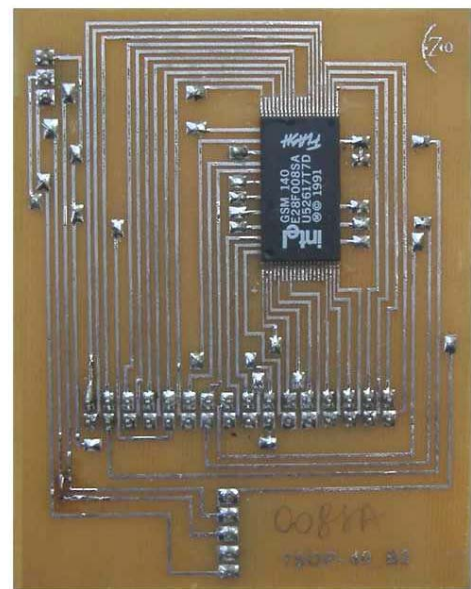
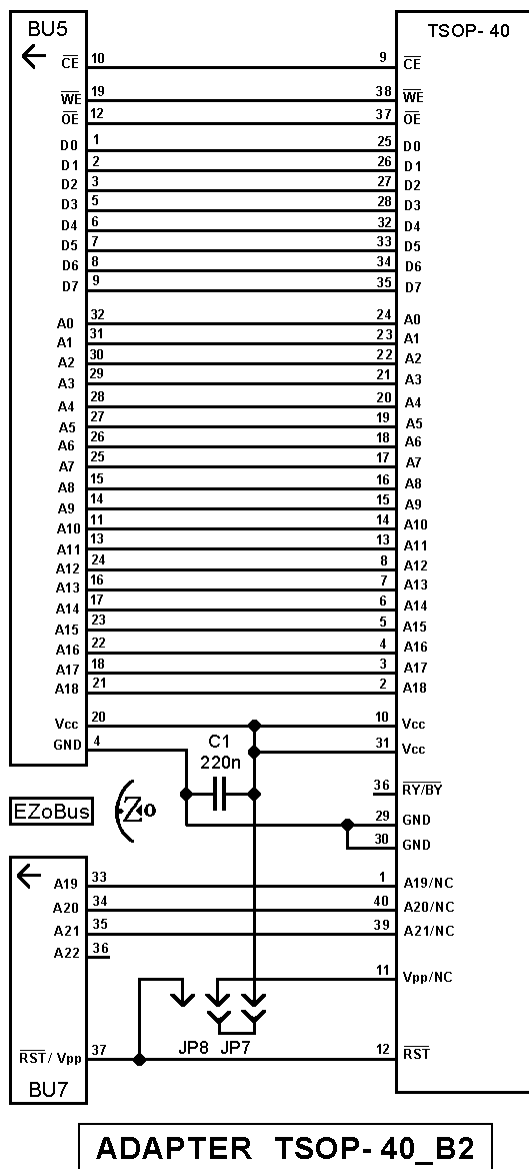
Optional:

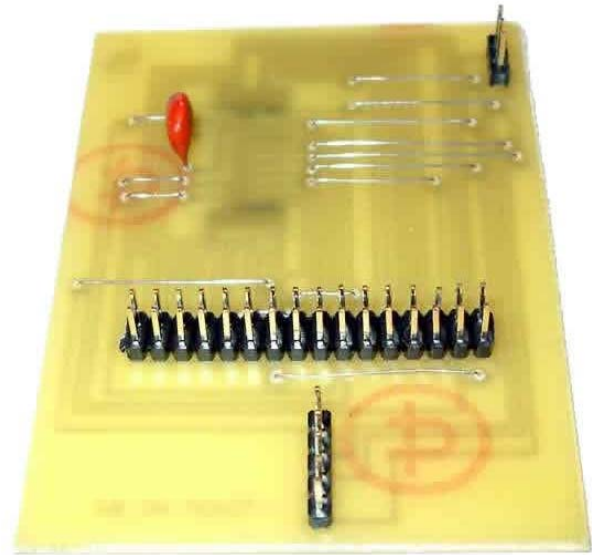
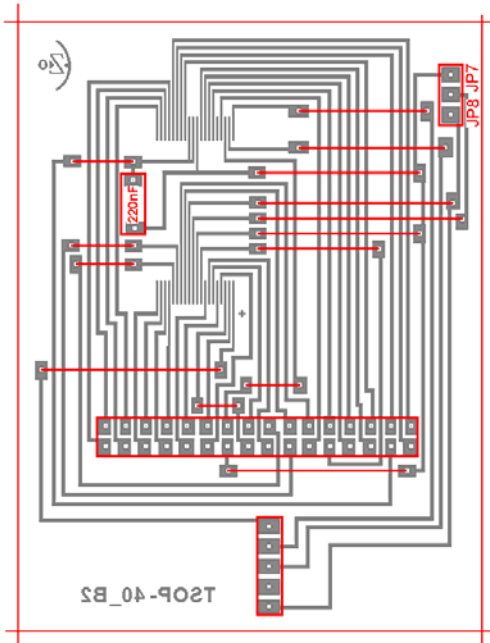
Surface Mount 0.5mm TSOP-40 Socket Meritec 980020-40-01

Solder chip on adapter contactpads or apply socket.

Adapter supports some chips in TSOP-48 package, each corners 2 pins are NC.

2. Schematic, PCB and pictures





3. Settings, supported chip list

Willem programmer software version 0.97g or latest.

Verified chips on mentioned adapter are underlined. Details find in chip_test.xls file

Software may not support some chip, report problem in Willem/EZoFlash forums.

GROUP A (Uniform sectors)

Selected device group

- Vcc=5V. Jumpers Jp1, Jp3 (5.0V), Jp5 (A18)

Actrans AC39LV080 **Alliance** AS29F080 **AMD** AM29F080, AM29F080B, AM29F016, AM29F016B, AM29F016B (TSOP-48), AM29F016C, AM29F016C (TSOP-48), AM29F016D, AM29F016D (TSOP-48), AM29F017B, AM29F017B (TSOP-48), AM29F017D, AM29F017D (TSOP-48), AM29F032B **Atmel** AT49F080, AT49F080T **EON** EN29F080 **Fujitsu** (MBM) 29F080, 29F080A, 29F080A (TSOP-48), 29F016A, 29F016E (TSOP-48), 29F017A (TSOP-48), 29F017E (TSOP-48), 29F033C **Hynix** HY29F080 **Macronix** MX29F080, MX29F016, MX29F016 (TSOP-48) **Mitsubishi** M5M29F016 (TSOP-48) **SGS/ST** **Micro** M29F080, M29F080A, M29F016B, M29F016D, M29F032D

- Vcc=3.3V. Jumpers Jp2 (3.6V), Jp5 (A18)

Atmel AT49LV080, AT49LV080T, AT49BV080, AT49BV080T

GROUP E (Vpp, Symmetrical Block)

Selected device group

- Vcc=5V, Vpp=12V. Jumpers Jp1, Jp3 (5V), Jp5 (A18), Jp8 (Vpp=12V)

Intel (TE, E) TE28F008SA **Micron** MT28F016S5 **Sharp** LH28F008SA(H)T,

- Vcc=5V, Vpp=5/12V. Jumpers Jp1, Jp3 (5V), Jp5 (A18), Jp7 (Vpp=5V) or Jp8 (Vpp=12)

Intel (TE,E) TE28F004S5, TE28F008S5, TE28F016S5 **Sharp** LH28F008SC(H)T-V

- Vcc=3.3V, Vpp=3.3/12V. Jumpers Jp2 (3.6V), Jp5 (A18), Jp7 (Vpp=3.6V) or Jp8 (Vpp=12V)

Intel (TE,E) TE28F004S3, TE28F008S3, TE28F016S3 **Micron** MT28F016S3

- Smart voltage Vcc=3.3/5.0V, Vpp=5/12V .

Jumpers Jp2 (3.6V), Jp5 (A18), Jp8 (Vpp=12V) or

Jumpers Jp1, Jp3 (5V), Jp5 (A18), Jp8 (Vpp=12V) or

Jumpers Jp1, Jp3 (5V), Jp5 (A18), Jp7 (Vpp=5V)

Intel (TE,E) TE28F004SC, TE28F008SC, TE28F016SC **Sharp** LH28F002SC(H)T, LH28F004SC(H)T-L, LH28F008SC(H)T-L, LH28F016SC(H)T-L