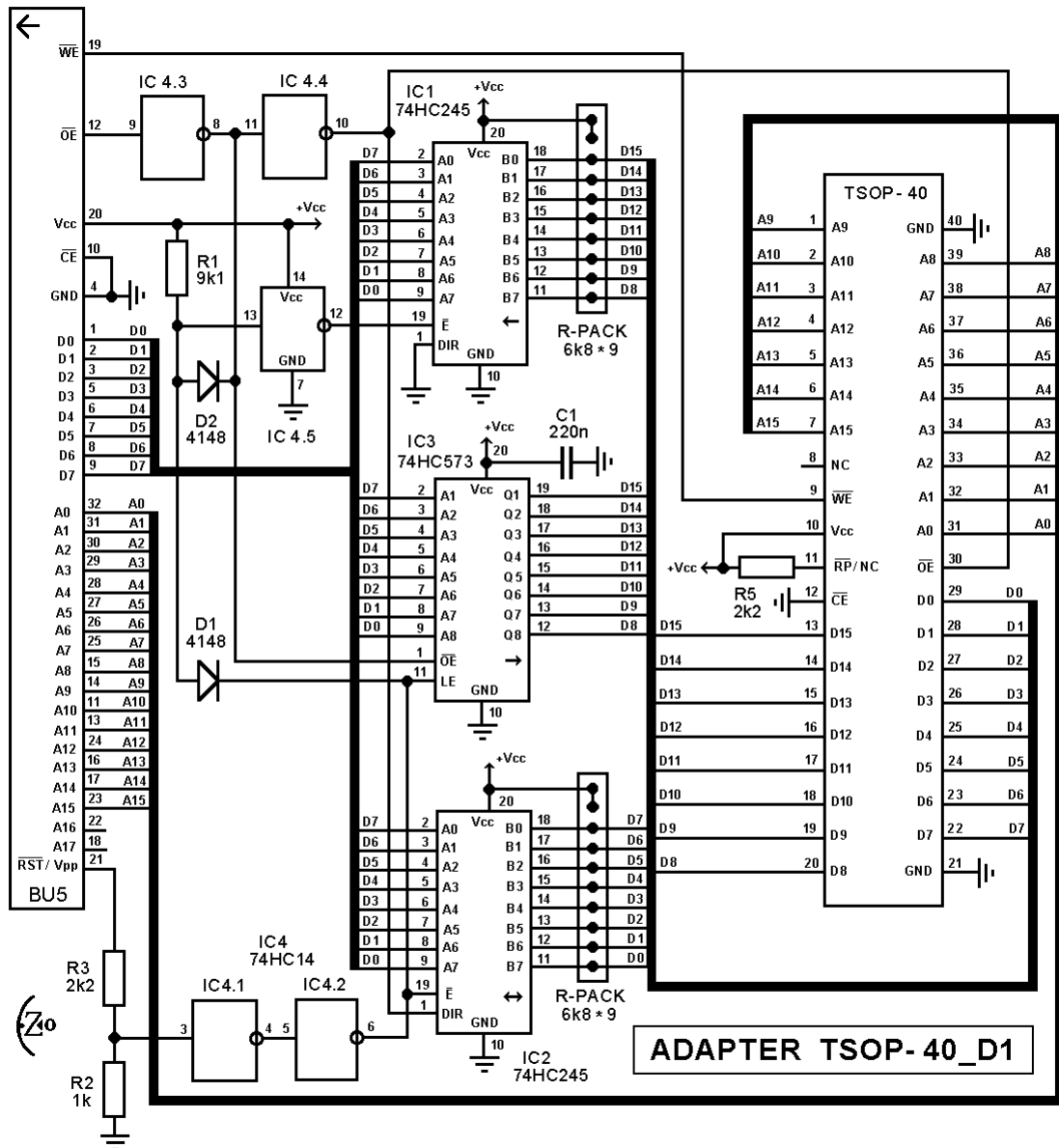


Adapter TSOP-40_D1

EzoFlash+ adapter for 16 bit flash memory in VTSOP-40 (10x14mm) package.

1. Schematic



2. Part list.

IC1, IC2 - 74HC245

IC3 - 74HC573

IC4 - 74HC14

D1, D2 - 1N4148 or KD522

R1 - 9k1 or 10k

R2 - 1k

R3, R5 - 2k2

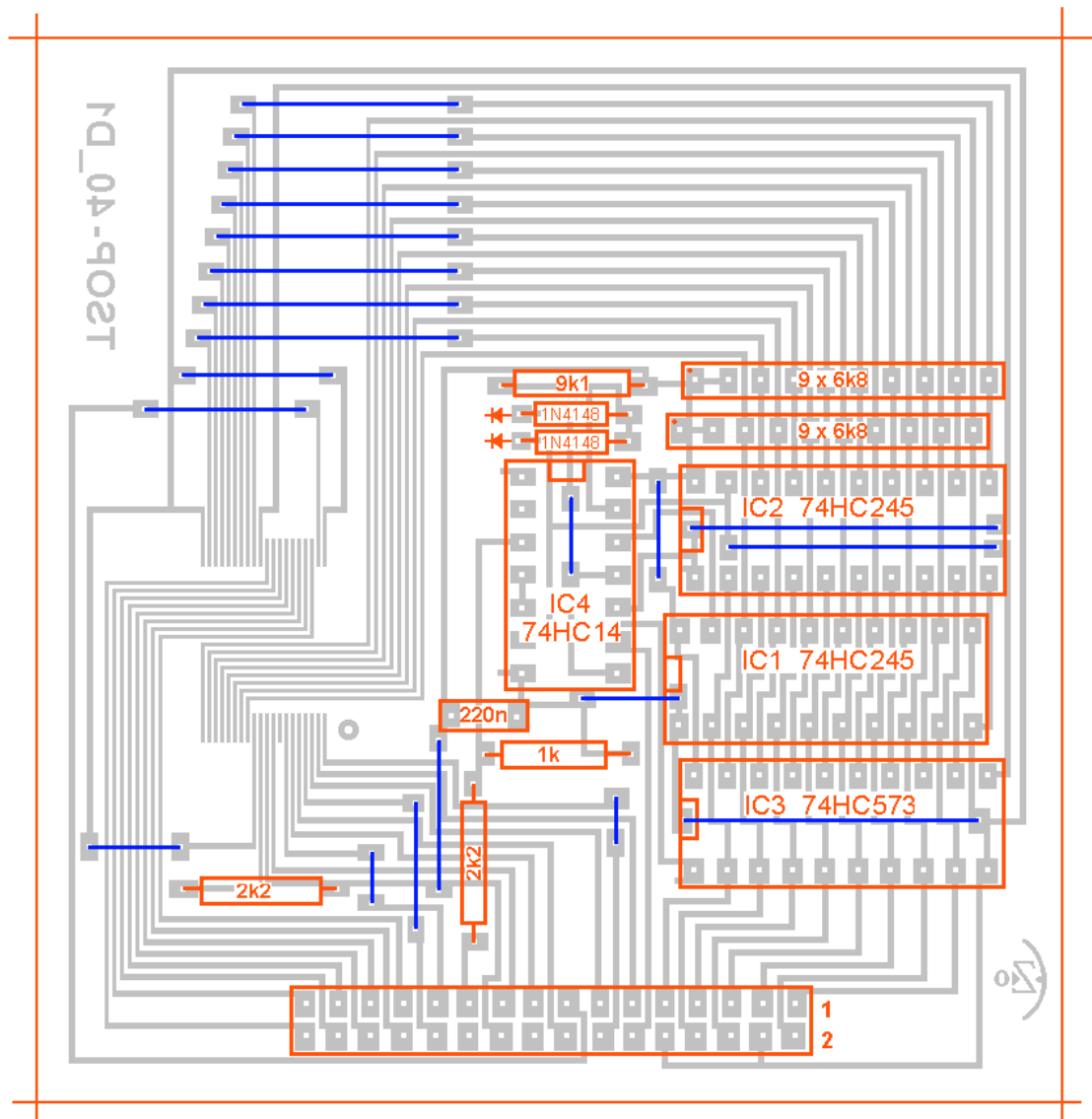
R-PACK1, R-PACK2 - 6k8 x 9 or 6k8..10k x 8

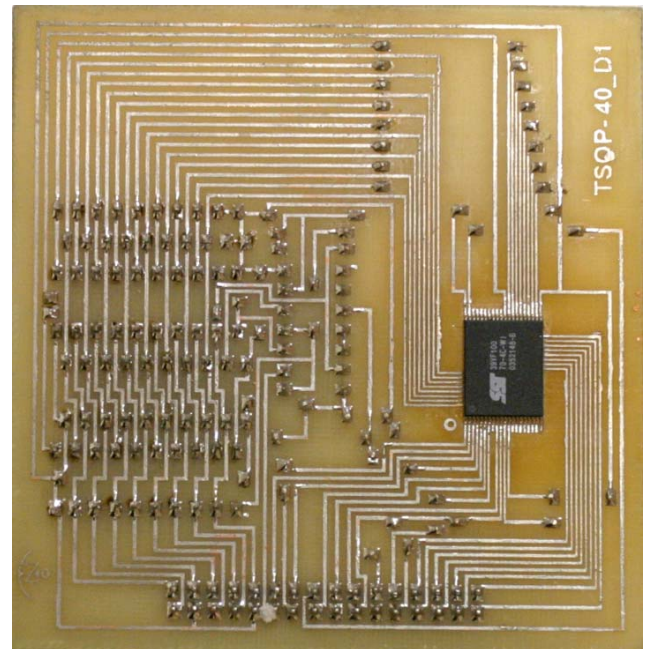
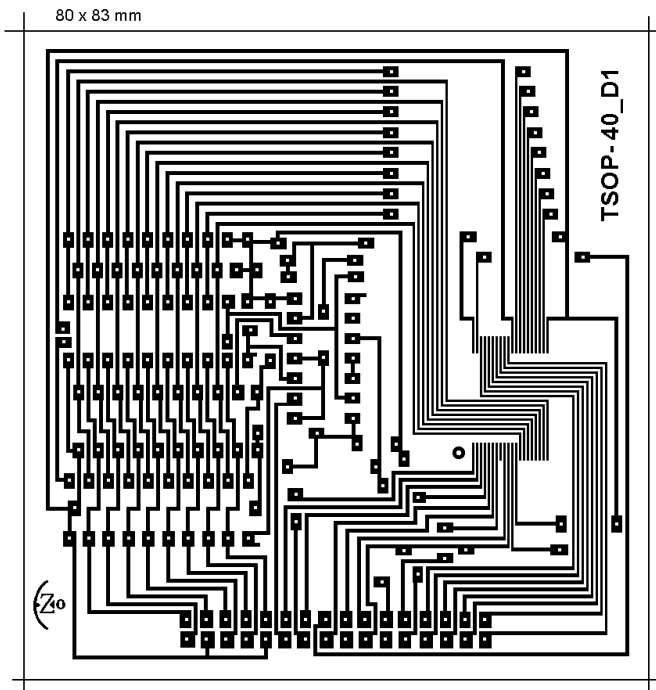
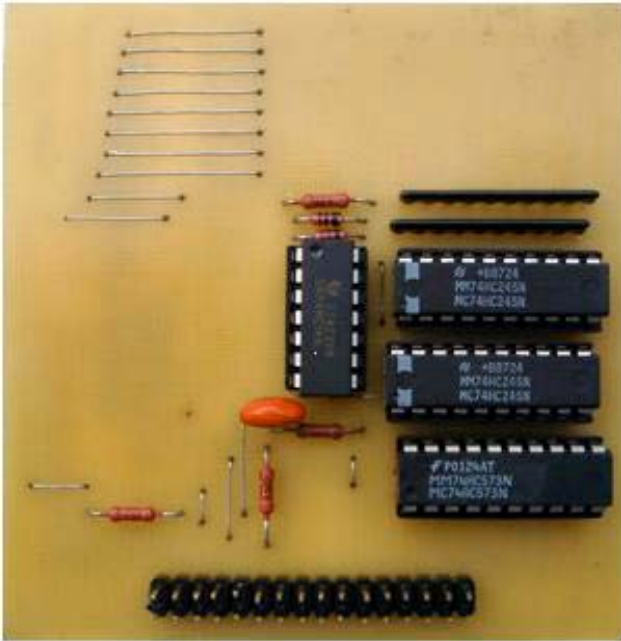
C1 - 220n

BU5 - Straight pin-header, division 2.54 , 2 x16

Solder chip on adapter contactpads.

3. PCB and pictures





4. Settings, supported chip list

Willem programmer software version 0.97ja or latest.

Verified chips on mentioned adapter are underlined. Details find in chip_test.xls file

Software may not support some chip, report problem in EZoFlash / Willem forums.

Selected device *Flash 16bit* > *SST39LF/VFxx00* > *39LF/VF100A*; *Flash 16bit* > *29Fxx00* > *29F100*

Vcc=5.0 Jp1,Jp3 (+5.0), Jp4 (Vpp)

ST Micro M29F102B, M29F102BB **Atmel** AT49F1024 , **Sanyo** LE28F1101T,

Winbond W29F102, W49F102

Vcc=3.3V Jp2 (+3.6V), Jp4(Vpp)

SST SST39VF100, SST39LF100, **Atmel** AT49LV1024, AT49LV1024A, AT49BV1024A,

Sanyo LE28FV1101T , **ST Micro** M29W102BT, M29W102BB, **Winbond** W49L102