

Adapter TSOP-56_A1

EzoFlash+ adapter for 8/16 bit flash memory in TSOP-56 package.

1. Part list.

BU5 – Straight pin-header, division 2.54, 2x16

BU7 – Straight pin-header, division 2.54, 1x5

C1 - 220nF

R1..R3 - 9k1

R4..R5 - 2k2

Jp7/Jp8 - Straight pin-header, division 2.54, 1x3 / Jumper, division 2.54mm

Jp9..Jp11 - Straight pin-header, division 2.54, 1x2 / Jumper, division 2.54mm

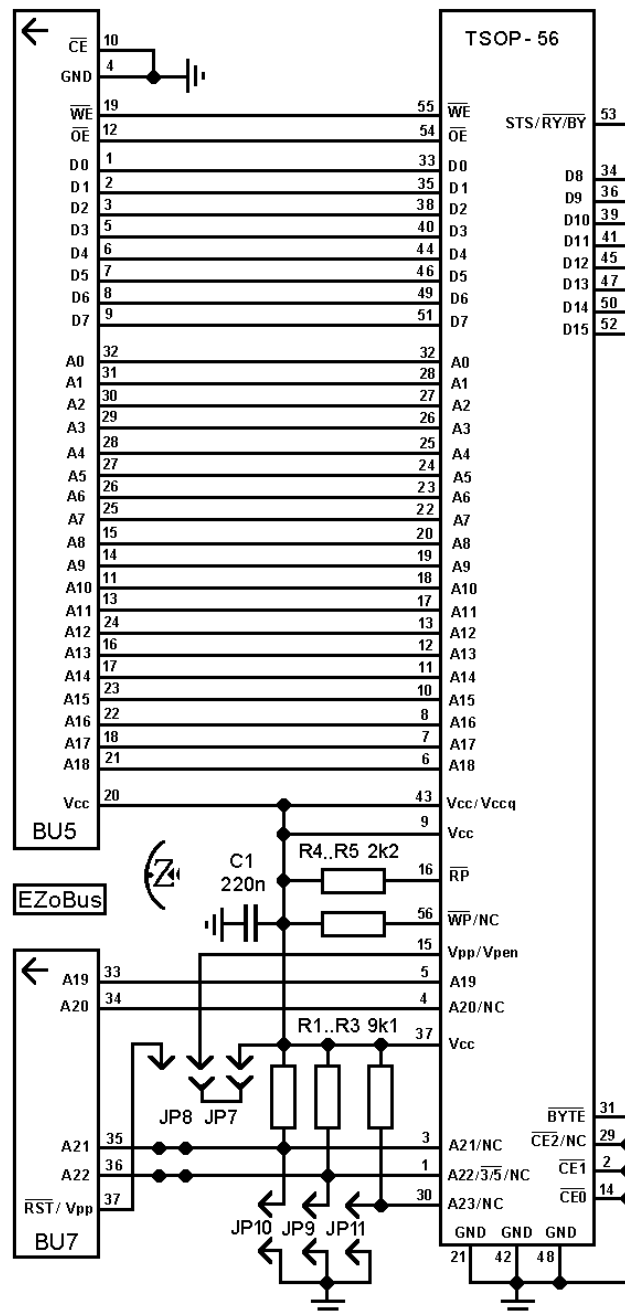
Optional:

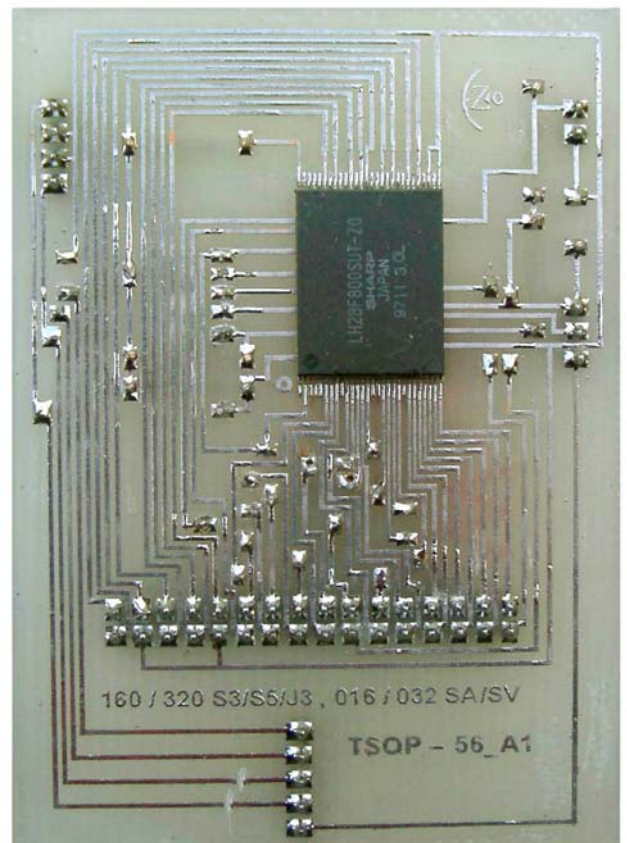
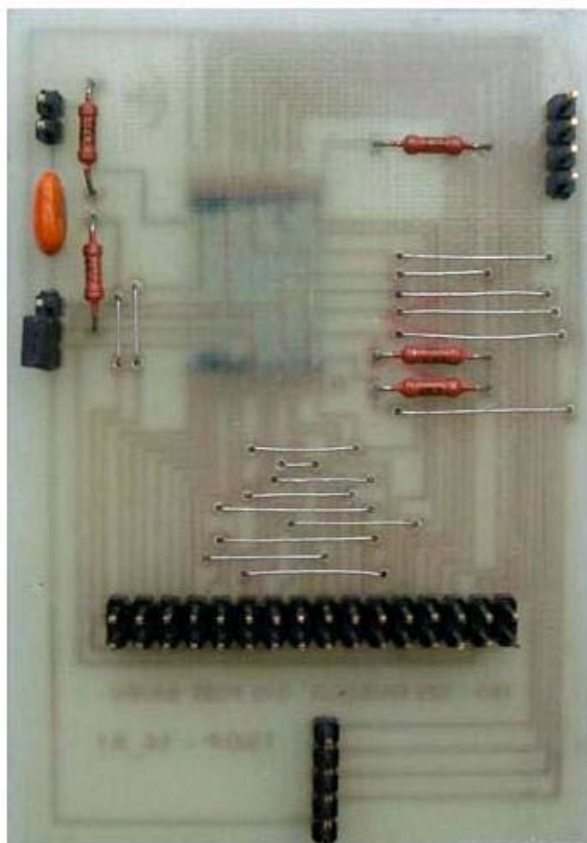
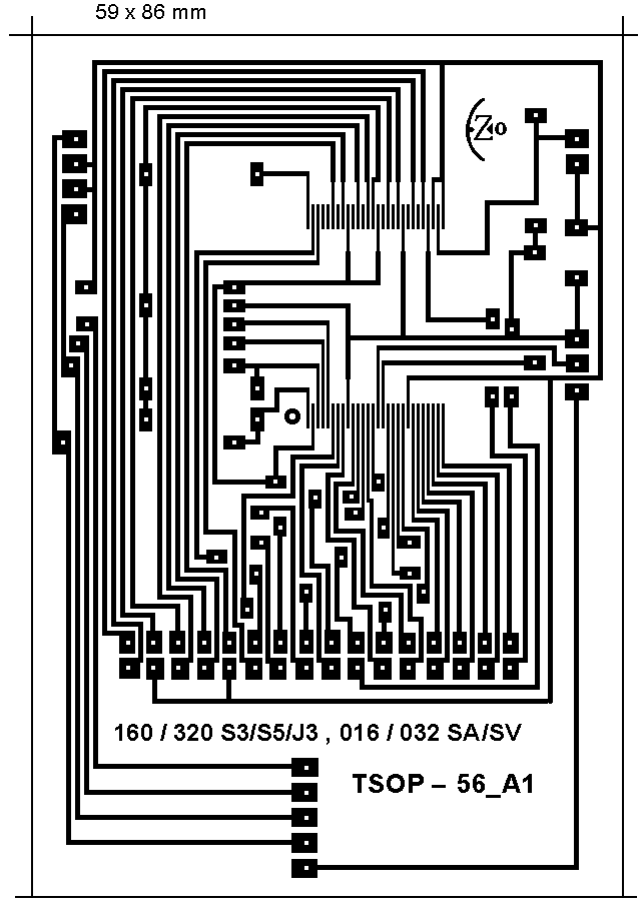
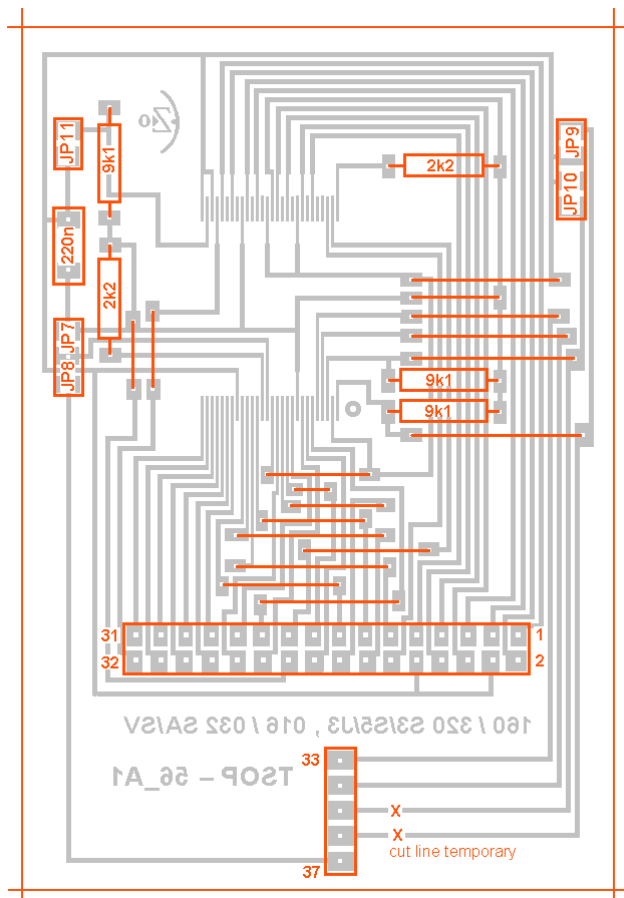
Surface Mount 0.5mm TSOP-56 Socket Meritec 980020-56-01

Cut lines to connector BU7 pins 35 and 36.

Solder chip on adapter contactpads or apply socket.

2. Schematic, PCB and pictures





3. Settings, supported chips list

Willem programmer software version 0.97g or latest.

Verified chips on mentioned adapter are underlined. Details find in chip_test.xls file

Software may not support some chip, report problem in Willem/EZoFlash forums.

- Smart voltage Vcc=3.3/5V. Vpp=12V.
Jumpers Jp1, Jp3 (+5V), Jp5 (A18), Jp8 (12V), Jp9 (sel.Vcc=5V) or
Jumpers Jp2 (Vcc=3.6V), Jp5 (A18), Jp8 (Vpp=12V)

Intel E28F016SA, E28F032SA **Sharp** LH28F016SAT

- Smart voltage Vcc=3.3/5V. Vpp=5/12V.
Jumpers Jp1, Jp3 (+5V), Jp5 (A18), Jp7 (Vpp=5V), Jp9 (sel.Vcc=5V) or
Jumpers Jp1, Jp3 (+5V), Jp5 (A18), Jp8 (Vpp=12V), Jp9 (sel.Vcc=5V) or
Jumpers Jp2 (+3.6V), Jp5 (A18), Jp8 (Vpp=12V)

Intel E28F016SV

- Vcc=3.3/5V. Vpp=5V. Jumpers Jp1, Jp3 (+5V), Jp5 (A18), Jp7 (5V)

Sharp LH28F400SU(H)T, LH28F800SU(H)T, LH28F016SU(H)T

- Vcc=5V. Vpp=5V. Jumpers Jp1, Jp3 (+5V), Jp5 (A18), Jp7 (5V)

Intel TE28F160S5 **Sharp** LH28F160S5(H)T

- Vcc=2.7-3.6V. Vpp=3.3V. Jumpers Jp2 (+3.6V), Jp5 (A18), Jp7 (3.6V)

Intel TE28F160S3 **Sharp** LH28F160S3(H)T

- Vcc=5V. Vpen=5V. Jumpers Jp1, Jp3 (+5V), Jp5 (A18), Jp7 (5V)

Intel E28F320J5

- Vcc=2.7-3.6V. Vpen=3.3V. Jumpers Jp1, Jp3 (+5V), Jp5 (A18), Jp7 (3.6V)

Intel (TE,E) 28F320J3, 28F640J3, 28F128J3 **Micron** MT28F320J3, MT28F640J3, MT28F128J3

Sharp LH28F640SPHT, LH28F128SPHT **ST** **Micro** M58LW032D, M58LW064D (only extension D)

16Mb chips can be programmed on Willem SW 0.97g or latest version, selected device i28F016, i28F160-T, i28F160-B, LH28F160-T or LH28F160-B.

Highest density (32Mb-64Mb) chips are not supported in existing SW versions.

Chips can be programmed in 16Mb parts, selected device LH28F160-T/-B.

Jumpers Jp10 (A21), Jp9 (A22) allow manage highest adress manually. Set jumper to get low level (log0) adress, remove jumper for high level (log1) adress.

Source file split in 16Mb parts. Load 16Mb block, erase, blank check, write, verify on each block:

0-16Mb Jp10 on (A21-low), Jp9 on (A22-low) ; here check valid get ID response.

16-32Mb Jp10 off (A21-high), Jp9 on (A22-low)

32-48Mb Jp10 on (A21-low), Jp9 off (A22-high)

48-64Mb Jp10 off (A21-high), Jp9 off (A22-high)

128Mb chip 28F128J3 can be programmed in 8 blocks, additionally jumper Jp11 (A23) used.