

Adapter PLCC-32_E1

EzoFlash+ adapter for 8-bit flash memory AT29C256 and AT29LV256 in PLCC-32 package.

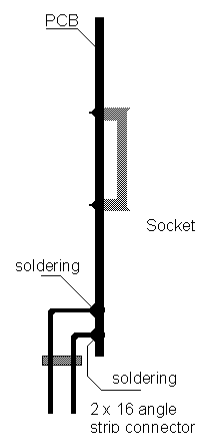
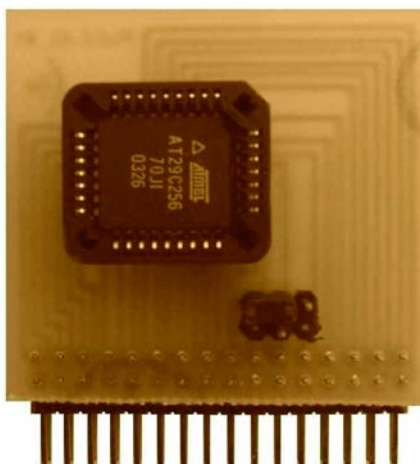
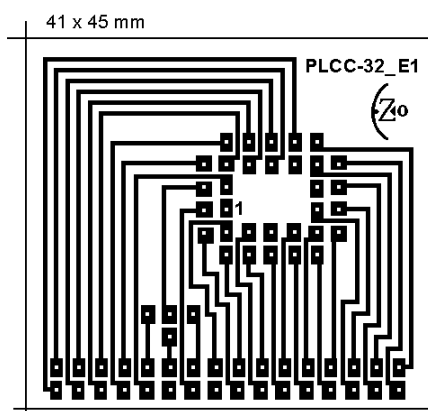
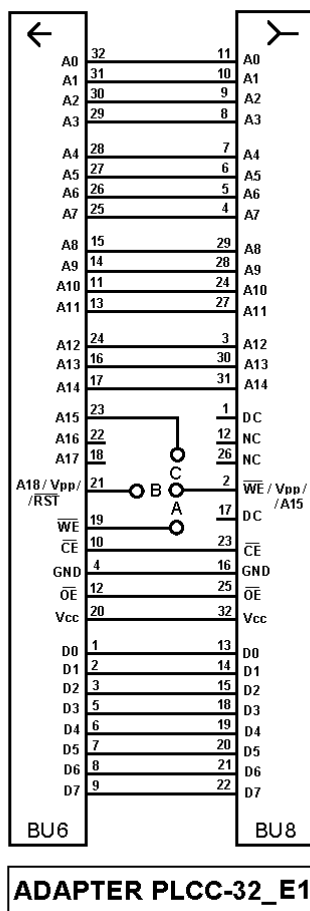
1. Part list.

BU6 – Angle dual pin-header 2 x16, division 2.54

BU8 – PLCC-32 socket

JpABC – Straight pin-header 2x3, division 2.54, (2 pins removed) / Jumper , division 2.54 (1pc)

2. Schematic, PCB and pictures



3. Settings, supported chip list

Willem programmer software version 0.97g or latest. Verified chips are underlined.

Selected device group *Flash AT29C/29EExxx > AT29C256*

Vcc=5V. Jumpers Jp1, Jp3 (+5V), JpA (pin1 WE#).

Atmel AT29C256

Vcc=3.3V. Jumpers Jp2 (+3.6V), JpA (pin1 WE#).

Atmel AT29LV256

Adapter allow read EPROM 27/27C256 (Jp1,Jp3,Jp4,JpB), 27/27C512 (Jp1,Jp3,JpC).